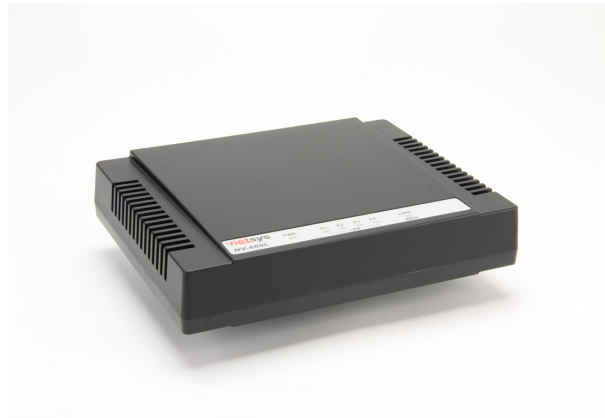


NV-600L

VDSL2 CORouter



**G993.2 VDSL2
standards**

**Symmetric
100Mbps/0.3 Km**

**Supports 8a, 8b, 8c, 8d,
12a, 12b, 17a, 17b, 30a
band profile**

General Description

Netsys NV-600 Series is a VDSL2 Router that leverages the extraordinary bandwidth promise of VDSL2 (max. 100Mbps Symmetric) technology, the next step in the delivery of new high-speed Internet applications to end-users in their homes or offices. Quick, easy and economical to install and maintain, the NV-600L works with the [NV-600R](#) over existing copper wire infrastructure. NV-600L is a CO (Central Office) device while NV-600R is a CPE (Customer Premise Equipment) device. Netsys NV-600 Series will allow operators worldwide to compete with cable and satellite operators by offering services such as HDTV, VOD, videoconferencing, high speed Internet access and advanced voice services including VoIP, over a standard copper telephone cable.

Netsys NV600 Series is seen by many operators as an ideal accompaniment to a FTTP rollout, where for instance fiber is supplied direct to an apartment block and from there copper cable is used to supply residents with high-speed VDSL2.

Key Features & Benefits

- Compliant with IEEE 802.3 & 802.3u Ethernet Standard
- Compliant with G993.2 VDSL2 standard
- Provides 4 x 10/100M auto-negotiation RJ-45 Ethernet port
- Supports Bandwidth up to 100Mbps over RJ-11 ports
- Provides POTS / ISDN Splitter on board
- Supports Downstream Power Back-Off(DPBO)
- Supports auto speed for VDSL2 port
- Supports Web management(HTTP), TFTP, Console(RS232)
- Supports uPnP/PPPoE/NAT/DHCP/DMZ/Firewall
- Supports Route & Switch(Bridge) mode
- Supports Loop back test
- Supports SNR indicator for check phone wiring quality
- Supports Interleave delay for Data Error & Noise Against
- Support 8a, 8b, 8c, 8d, 12a, 12b, 17a, 17b, 30a band profile
- Support 997,998 band plan
- Provides surge protection for VDSL2 port
- EMI Compliant: CE, FCC, VCCI

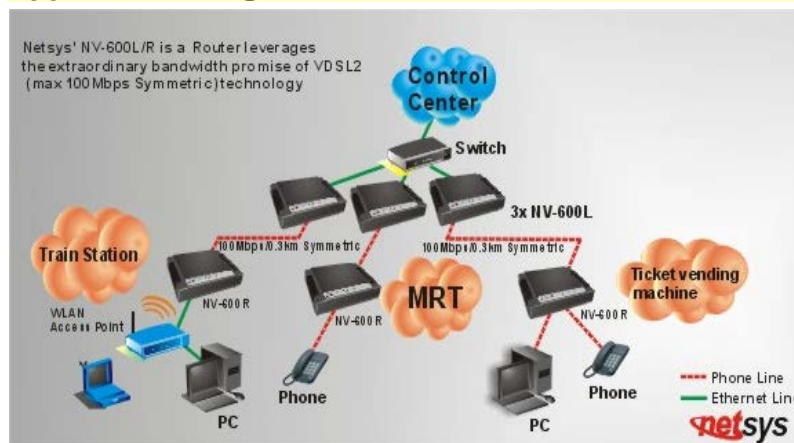
Product Specifications

Standard:	IEEE802.3 standard
	IEEE802.3u standard
	Compliant G993.2 VDSL2 standard
Interface:	4 * RJ-45 10/100Mbps Ethernet port
	1 * RJ-11 connector for VDSL2
	1 * RJ-11 connector for POTS/ISDN device
Band Profile:	8a, 8b, 8c, 8d, 12a, 12b, 17a, 17b, 30a
Band Plan:	997, 998
Max. Bandwidth:	Symmetric 100 Mbps / 0.3 Km
LED indication:	Power LED
	Link/Active Status for Ethernet port * 4
	Link LED for VDSL port
Switch method:	Store and forward
Console port:	RS-232C/115200bps
Flow control:	Full duplex: IEEE 802.3x
	Half duplex: Back pressure
Typical Power Consumption:	5.52W
Operating Temperature:	0°C ~ 50°C (32°F ~ 122°F)
Storage Temperature:	-20°C ~ 65°C (-4°F ~ 149°F)
Humidity:	10 to 90% (non-condensing)
Dimensions:	184 x 146 x 40 mm (7.2" x 5.74" x 1.57")
Chipsets:	Lantiq MIPS ADM5120P
	Lantiq VINAX

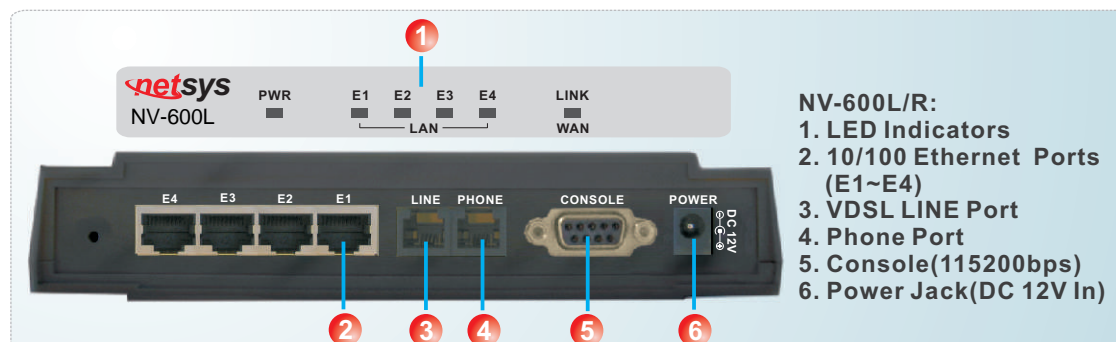
Note:

Specifications in this datasheet are subject to change without prior notice.

Application Diagram



Detailed View



Contact

E-mail: sales@endy.com.au
 1300 725 323
 1/14 Wellington Street, ACACIA RIDGE QLD 4110 Australia
 Check www.endy.com.au for your contact information