



## MetroLinq™ 60

Cloud-Enabled Outdoor 60GHz PTP + 5GHz



### Product Overview

IgniteNet™'s MetroLinq™ 60 is the world's first cost-effective 60GHz PTP/PTMP radio enabling high performance, interference-free connections worldwide. The MetroLinq™ 60 has an added advantage of being license-free in most markets globally, allowing ultra fast deployment and without the hassle of other frequency bands requiring a license. The MetroLinq™ 60 also includes a second 5GHz radio which can be configured as PTP (backup) to provide integrated redundancy without any additional hardware or complexity!

### Key Features and Benefits

#### Interference-Free & Unlicensed Band

The IgniteNet™ MetroLinq™ 60 offers unprecedented performance - combining both the benefits of unlicensed band operation with no interference!

#### Dual Band 60GHz & 5GHz Operation

The MetroLinq™ 60 includes a second 5GHz radio which can be configured as a backup to the 60GHz to provide automatic failover during adverse conditions. This allows links to be extended further without effecting link availability.

#### Powerful, Flexible Configuration

The MetroLinq™ 60 can operate either as a stand-alone device or as a coordinated, cloud-managed device, easily meeting the requirements of any installation.

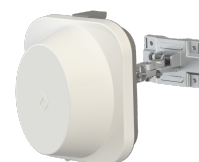
#### Robust Weather-Resistant Design

The MetroLinq™ 60 features a hybrid metal/plastic design built to withstand the harshest environments including precipitation, hot/cold weather and high/low humidities.

### Product Variants

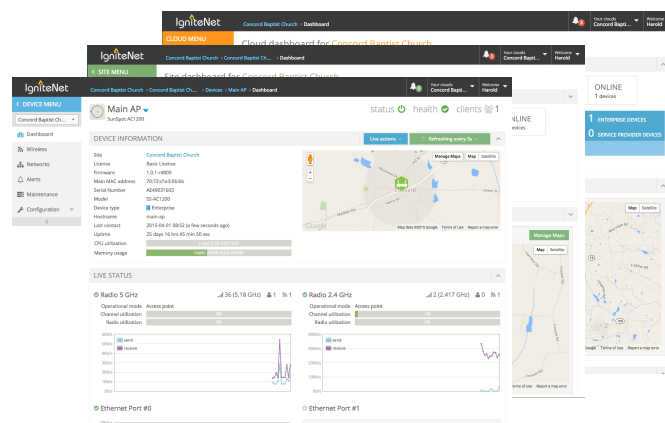


35cm size w/ 60GHz + 5GHz



19cm size w/ 60GHz + 5GHz

### Global Cloud Management



### Features

#### HARDWARE FEATURES

- ✓ 2x Gigabit Ethernet Port (PoE IN)
- ✓ 1x Power tap (Power OUT)
- ✓ 1x USB 2.0 Port (optional)
- ✓ Dual flash image support

#### LEDs

- ✓ Power, Ethernet, Wireless, Health/Status, Aiming

#### DIMENSIONS (L x W x H)

- ✓ 350 x 350 x 200 mm (ML-60-35)
- ✓ 190 x 190 x 120 mm (ML-60-19)

#### WEIGHT

- ✓ 3.5 kg with mount (ML-60-35)
- ✓ 2 kg with mount (ML-60-19)

#### POWER

- ✓ 24V/1A passive Gigabit PoE
- ✓ 15W max power consumption

#### OPERATING ENVIRONMENT

- ✓ Operating Temperature: -40C° to +70C°
- ✓ Store Temperature: -40C° to 70C°
- ✓ Operating Humidity: 10 to 90% non-condensing (RH)

#### REGULATORY / STANDARDS COMPLIANCE

- ✓ FCC/IC
- ✓ CE

#### RANGE

- ✓ Up to 1.5km (ML-60-35, location dependent)
- ✓ up to 900m (ML-60-19, location dependent)

#### RF PERFORMANCE (TX)

- ✓ 60GHz: 14dBm @ 2.5Gbps OTA (1Gbps aggregate throughput)
- ✓ 5GHz: 24dBm @ 866Mbps OTA (500Mbps aggregate throughput)

#### RF PERFORMANCE (RX)

- ✓ 60GHz: -74dBm @ MCS1; -65 @ MCS5; -60dBm @ MCS9
- ✓ 5GHz: -94dBm @ MCS0; -64dBm @ MCS15

#### CHANNEL BANDWIDTH

- ✓ 60GHz: 2GHz
- ✓ 5GHz: 80MHz, 40MHz, 20MHz

#### KEY FEATURES

- ✓ 1Gbps Aggregate throughput; dynamically allocated (60GHz)
- ✓ 500Mbps Aggregate throughput; dynamically allocated (5GHz)
- ✓ Jumbo packet support (up to 7900bytes)
- ✓ Management VLAN support and VLAN pass-through
- ✓ Supports Service Provider and Enterprise type networks
- ✓ Stand-alone or Cloud-controlled operating modes
- ✓ PTP/Client modes with Flexible Bridging (60GHz)
- ✓ Link failover/backup (60GHz + 5GHz PTP Mode)
- ✓ 128bit AES Encryption (standard; 5GHz and 60GHz)

#### APPLICATIONS

- ✓ Fixed Wireless Access (broadband)
- ✓ 3G/4G Backhaul
- ✓ Metro WiFi
- ✓ Campus Interconnection
- ✓ Hybrid Fiber/Wireless Networks

### Ordering Information

Part Number	Description
ML-60-35-XX	60GHz Outdoor PTP + 5GHz w/ Integrated 42dBi (60GHz) and 22dBi (5GHz) antenna
ML-60-35-1-XX	60GHz Outdoor PTP + 5GHz w/ Integrated 42dBi (60GHz) and RPSMA Connectors (5GHz)
ML-60-19-XX	60GHz Outdoor PTP + 5GHz w/ Integrated 36dBi (60GHz) and 16dBi (5GHz) antenna
ML-60-19-1-XX	60GHz Outdoor PTP + 5GHz w/ Integrated 36dBi (60GHz) and RPSMA Connectors (5GHz)

**\*\*XX is used to denote localization (US, EU, AU, CN)**

### Contact