

Edge-core

# Quick Installation Guide

EWS100

Wireless LAN Controller

## Copyright Notice

This document is protected by USA copyright laws and other laws and is the property of Edgecore Networks Corporation. You may not copy, reproduce, distribute, publish, display, perform, or modify any part of this publication in any form or by any means without prior written permission from Edgecore Networks Corporation. You may not alter or remove any copyright or other notice from copies of the content. All other brand and product names are claimed or registered marks of their respective companies or organizations.

All rights reserved.

## FCC Caution

This equipment has been tested and proven to comply with the limits for a class B digital device, pursuant to part 15 of the FCC Rules. These limits are designed to provide reasonable protection against harmful interference in a residential installation. This equipment generates uses and can radiate radio frequency energy and, if not installed and used in accordance with the instructions, may cause harmful interference to radio communications. However, there is no guarantee that interference will not occur in a particular installation. If this equipment does cause harmful interference to radio or television reception, which can be determined by turning the equipment off and on, the user is encouraged to try to correct the interference by one or more of the following measures:

- Reorient or relocate the receiving antenna.
- Increase the separation between the equipment and receiver.
- Connect the equipment into an outlet on a circuit different from that to which the receiver is connected.
- Consult the dealer or an experienced radio/TV technician for help.

---

## Preface

---

This Quick Installation Guide provides instructions on how to install the EWS100 and to get the network up and running with basic configurations.

---

## Package Contents

---

1. EWS100 x 1
2. Quick Installation Guide (QIG) x 1
3. Ethernet Cable x 1
4. Power Adapter (12V/1A) x 1

## System Overview

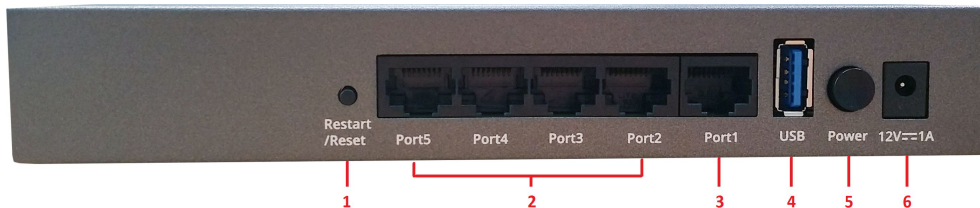
### Front Panel



#### LED Indicators:

- **Power:** Steady green light indicates a proper connection to a power source.
- **Status:** Blinking green light indicates that the system is in the process of initializing. It turns steady-on when the system is in operation state.

### Back Panel



1. **Restart / Reset Button:** To restart the system, press and hold the button for more than 5 seconds and release the button after the status LED on the front panel starts blinking. To reset the system to factory default settings, press and hold the button for more than 10 seconds and release the button after the status LED turns from blinking to off.
2. **Port5 – Port2:** RJ-45 ports (10/100/1000 Base-T) for the downlink Ethernet connection (LAN4 – LAN1). Downlink devices such as APs and client PCs can be attached here. **Note:** In the Web Management Interface, there is an option to switch the role of Port2 from the downlink port (LAN1) to the uplink port (WAN2).
3. **Port1:** RJ-45 port (10/100/1000 Base-T) for the uplink Ethernet connection (WAN1). It is the default port that can pass all traffic to an uplink device, such as the xDSL modem / router.
4. **USB:** USB port reserved for future use.
5. **Power:** Button to power on/off the system.
6. **Power Socket:** Socket to attach 12V/1A power adapter.

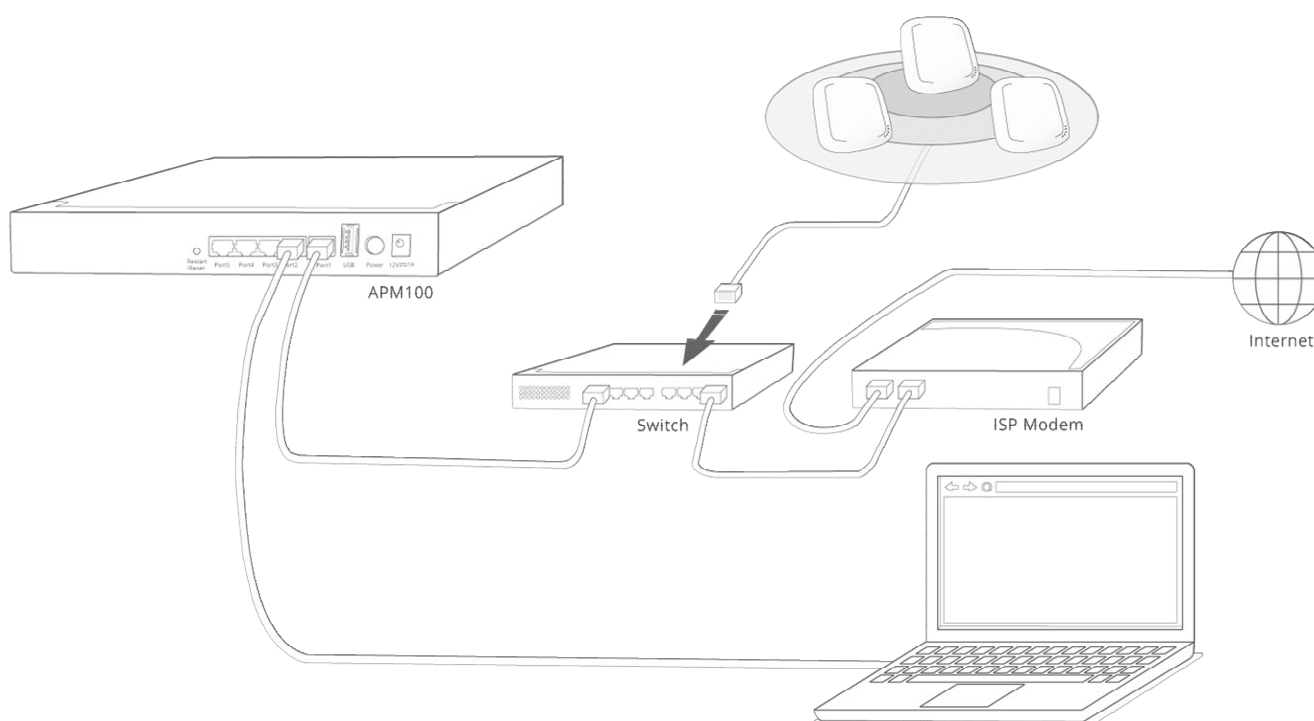


*Do not power off the device after restarting or resetting the device. The process takes approximately two minutes to complete.*

## Hardware Installation

### Follow these steps to install EWS100:

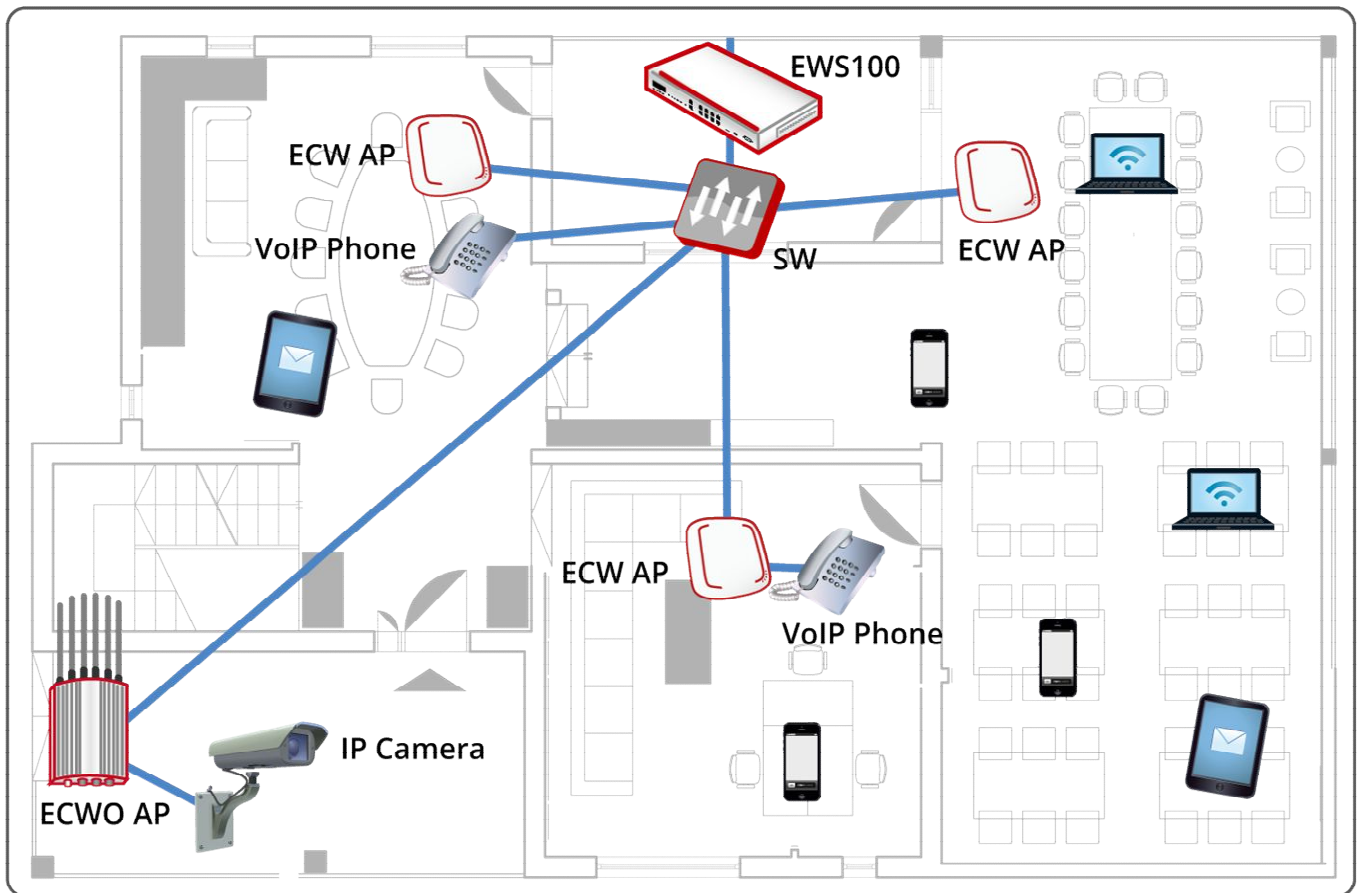
1. Connect the power adapter to the power socket on the back panel of the EWS100. The Power LED will turn steady green, indicating that the power source is properly connected.
2. Connect the WAN1 (Port1) of the EWS100 to a switch of an internal network, or directly to the ISP modem / router, using an Ethernet cable. The LED of this port will be on, indicating a proper connection.
3. Connect an administrative PC directly to a LAN port of the EWS100 via an Ethernet cable. The LED of this LAN port will be on, indicating a proper connection.
4. Lastly, access points can be connected to the switch, or directly to the LAN ports of the EWS100.



## Getting Started

### < System Overview >

Edgecore EWS100 is a Wireless LAN Controller that supports user management, AP management, and other management functions. The following network diagram is a deployment example where the EWS100 is able to centrally manage users and wireless access points at this site.



### < Web Management Interface >

The EWS100 has a web-based interface for configuration and management. Follow the steps below to access the Web Management Interface (WMI) for the first time.

1. Connect your administrative PC directly to a LAN port of the EWS100 via an Ethernet cable. The PC should be assigned an IP Address in the same subnet as the EWS100's (192.168.1.0/255.255.0.0).



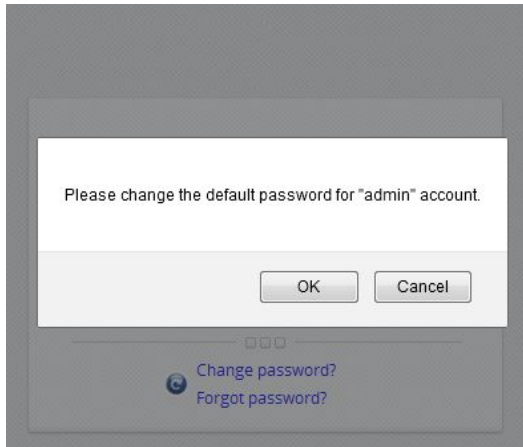
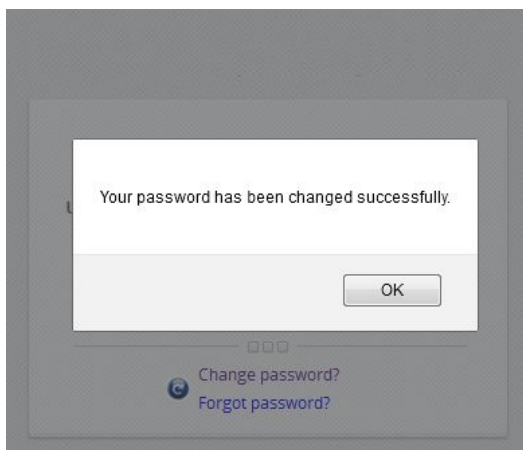
2. Launch a web browser and enter the IP Address of Default Service Zone (192.168.1.254) in the address field.



Log in using default Username (**admin**) and Password (**admin**) on the Administrator Login Page:

A screenshot of the Administrator Login Page. The page has a title "LOGIN" at the top. Below the title are two input fields: "Username" with the text "admin" and "Password" with five dots. To the right of the password field is a "Log In" button. Below the input fields are two links: "Change password?" and "Forgot password?".

3. After a successful login, the system prompts for the administrator to change password for security reasons. The new password needs to be at least 6 characters long and include at least one alphabet and one number.

A screenshot of the "Edit New Password" form. The form has a title "Edit New Password" at the top. Below the title are four input fields: "Name" with the text "admin", "Original Password" with five dots, "New Password" with seven dots, and "Verify Password" with seven dots. Below the input fields are two buttons: "Apply" and "Cancel".

4. Welcome to System Main Menu page will appear after a successful login with the new password.

### Welcome to System Main Menu



This Administrative Web Interface allows you to set various networking parameters, to customize network services, to manage user accounts and to monitor user status.

Functions are separated into the following main categories:

[System](#) , [Users](#) , [Devices](#) , [Network](#) , [Utilities](#) , and [Status](#) .

For a quick overview of the system, please refer to the [Dashboard](#).

For shortcut links to the Dashboard, you may click the 4ipnet Logo on the top-left, or click the '[Dashboard](#)' icon on the top-right.

The '[Star](#)' icon on the top right is a [Setup Wizard](#) that provides a quick step-by-step guide on setting up your system.

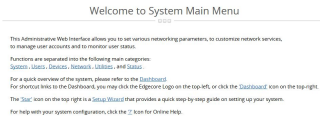
For help with your system configuration, click the [?](#) icon for Online Help.



## Basic Configurations

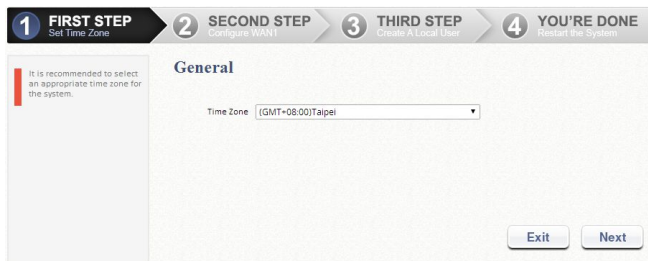
### < Setup Wizard >

Use **Setup Wizard** (the button on the top right corner) to set up the EWS100 with basic configurations for the first time:



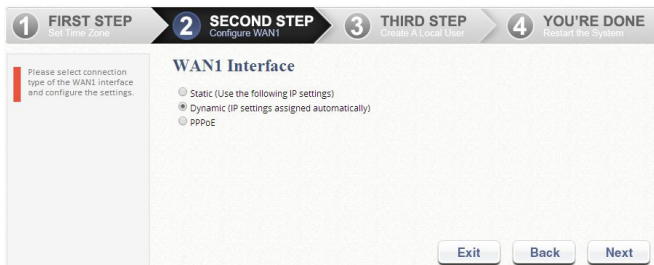
#### Step 1: General

- Select a time zone to set up the system time.
- Click **Next** to continue.



#### Step 2: WAN1 Interface

- Select a proper type of uplink connection for WAN1 interface: **Static**, **Dynamic**, or **PPPoE**.
- Click **Next** to continue.



#### Step 3: Local User Account (Optional Step)

Create a new user account in the Local account database. You can click **Skip** to go directly to Step 4.

- Enter the **Username** (e.g. "testuser") and **Password** (e.g. "testuser") to create a new local account.
- Click **Next** to continue.
- More local accounts can be added by clicking the **Back** button in Step 4.

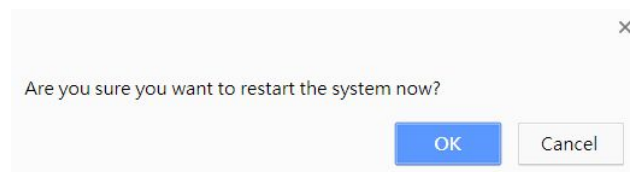


#### Step 4: Confirm and Restart

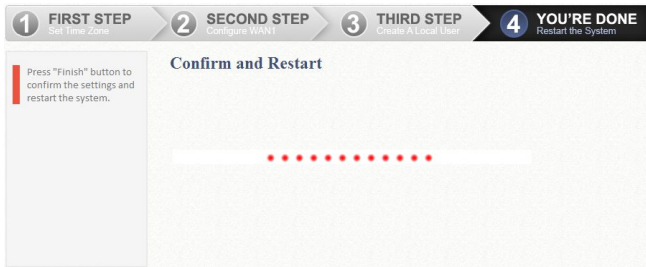
- Click **Finish** to save current settings and restart the system.



- A confirmation dialog box will then appear. Click **OK** to continue.

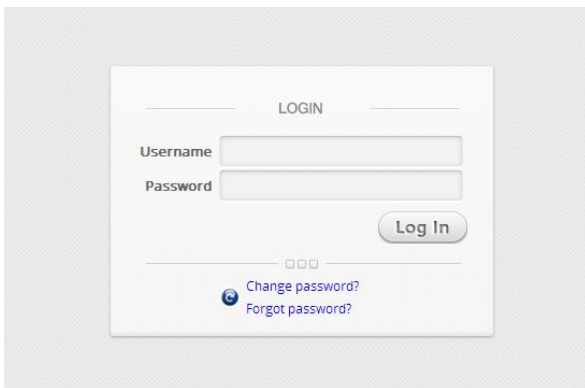


- A **Confirm and Restart** message will appear during the restarting process. Please do not interrupt the system until the Administrator Login Page appears.



► **Note:** The system will try to reach a DNS server at this stage. Therefore, it may take a longer time if the configured DNS cannot be found.

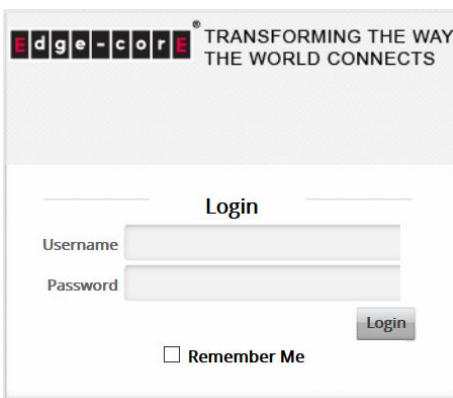
- The system restart process is completed when the following **Administrator Login Page** appears.



## < Verify Setup with User Login >

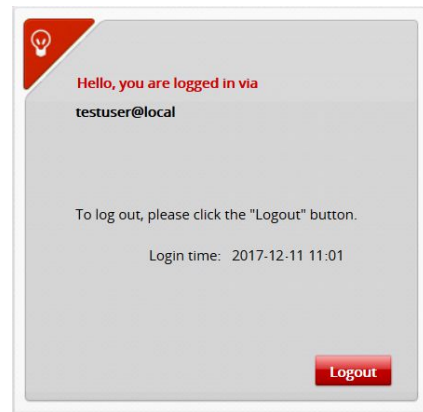
Follow the steps below to verify the basic configurations completed through **Setup Wizard**:

1. Connect a laptop PC to any LAN Port of the EWS100. The PC will obtain an IP address automatically from the EWS100.
2. Launch a web browser and enter any HTTP website URL. The default **User Login Page** will appear.



3. Enter the *Username* and *Password* of a local user account previously created via Setup Wizard (e.g. Username: *testuser* and Password: *testuser*); then Click **Login**.

The Login Success Page appears after the user is successfully authenticated by the system.



**Well Done!** The EWS100 is now up and running with the basic configurations.

### » Note:

1. EWS100 supports multiple authentication server options including built-in local user database and external authentication servers.
2. The complete username format is **userid@postfix**, where the "postfix" string stands for the back-end authentication server. Therefore, match-up between username and back-end authentication server is based on the "postfix" string in the complete username.
3. Normally, users have to enter the complete username (e.g. **testuser@local**) during login. However, the postfix can be omitted when the postfix matches the default authentication server option. For example, LOCAL database is enabled as the default authentication option; therefore, in this case, you can simply enter **testuser** as the username to log in.