

Quick Start Guide

802.11ac Outdoor Stand-Alone Access Point

ECWO3320, ECWO3324, ECWO4320, ECWO4324, ECWO5320, ECWO5324

The ECWO3320/ECWO3324/ECWO4320/ECWO4324/ECWO5320/ECWO5324 are single- and dual-band (2.4/5 GHz) access points (APs) that are housed in a waterproof enclosure for mounting outdoors. The units include a built-in mounting bracket for attaching to a 1.5 to 6-inch pole and they can be powered through their Ethernet cable connection from a power injector module that is installed indoors.

The Outdoor Access Stand-Alone Points include these models:

- ◆ **ECWO3320** — 2.4 GHz stand-alone AP with internal antennas
- ◆ **ECWO3324** — 2.4 GHz stand-alone AP with external antennas
- ◆ **ECWO4320** — 5 GHz stand-alone AP with internal antennas
- ◆ **ECWO4324** — 5 GHz stand-alone AP with external antennas
- ◆ **ECWO5320** — Dual-band stand-alone AP with 5 GHz internal antennas
- ◆ **ECWO5324** — Dual-band stand-alone AP with external antennas



Note: For Safety and Regulatory information, refer to the Safety and Regulatory Information document included with the AP.

Follow the steps in this guide to install the AP in your network.



Caution: The planning and installation of the AP requires professional personnel that are trained in the installation of radio transmitting equipment. The user is responsible for compliance with local regulations concerning items such as antenna power, use of lightning arrestors, grounding, and radio mast or tower construction. Therefore, it is recommended to consult a professional contractor knowledgeable in local radio regulations prior to equipment installation.

1. Unpack the AP

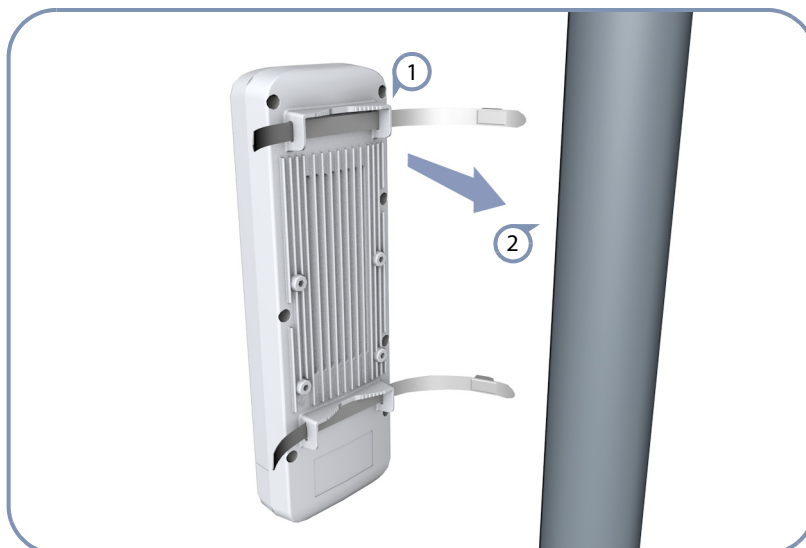
Unpack the AP and check the package contents.

- ◆ Outdoor Stand-Alone Access Point
ECWO3320, ECWO3324, ECWO4320, ECWO4324, ECWO5320, or ECWO5324
- ◆ Pole-mounting kit — includes two steel-band clamps
- ◆ PoE power injector with power cord — either US, Continental Europe or UK
- ◆ Documentation — *Quick Start Guide* and *Regulatory and Safety Information*

2. Mount the AP

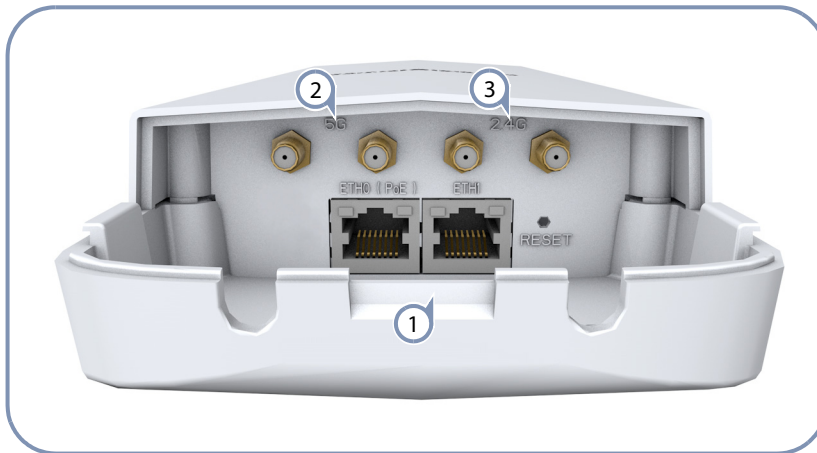
After planning your installation, mount the unit on a pole, mast, or tower using the included two steel-band clamps.

Also, for models that require external antennas, install the antennas near the AP and attach the RF coaxial cables to the appropriate connectors on the AP.



Pole Mounting

- 1 Feed the steel-band clamps through the integrated pole-mount bracket points on the back of the AP.
- 2 Fasten the steel-band clamps around the pole to secure the AP to the pole.



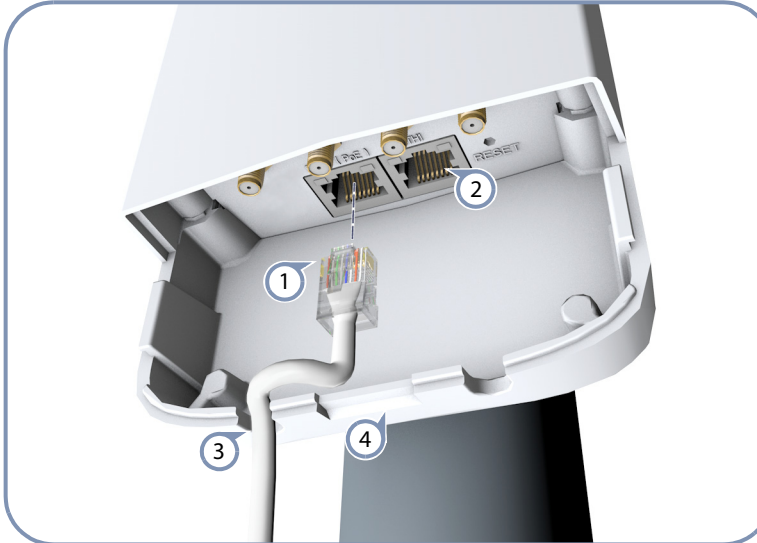
Attach External Antennas

- 1 Remove the front port cover by pushing the locking tab up and then sliding the cover off.
- 2 Connect external antennas to the AP's 5 GHz RP-SMA connectors using RF coaxial cable provided in the antenna package.
- 3 Connect external antennas to the AP's 2.4 GHz RP-SMA connectors using RF coaxial cable provided in the antenna package.



Note: The number of available 2.4 GHz or 5 GHz external antenna connectors depends on the specific model.

- 3. Connect Cables** Connect outdoor-rated Ethernet cable to the 1000BASE-T RJ-45 ETH0 (PoE) port on the unit.



- 1 Connect outdoor-rated Category 5e or better cable to the left-side RJ-45 ETH0 (PoE) port.
- 2 (Optional) Connect a local LAN switch or computer to the right-side ETH1 100BASE-TX RJ-45 port.
- 3 Pass the cables through the access holes at the bottom of the AP.
- 4 Replace the port cover on the AP and push the locking tab down to secure it in place.

- 4. Connect Power** Install the PoE power injector indoors. Connect the power injector to the Ethernet cable from the AP, to a port on a local LAN switch, and then to an AC power source.



Caution: The power injector module is designed for indoor use only. Never mount the power injector outside with the AP unit.



- ① Connect the Ethernet cable from the AP to the "POE" port on the power injector.
- ② Connect Ethernet cable from the "LAN" port on the power injector to a LAN switch.
- ③ Connect the power cord to a nearby AC power source (100-240 VAC, 50/60 Hz).

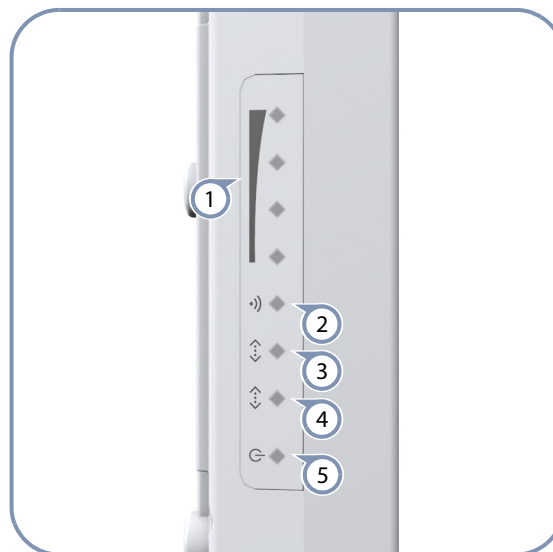


Note: Connecting the Ethernet cable from the AP to the injector module powers on the unit.

5. Verify AP Operation

Verify basic AP operation by checking the system LEDs.

The power LED should be on green, the ETH0 port LED on/blinking green, and the 2.4GHz/5GHz wireless LED on/blinking green (2.4 GHz) or blue (5 GHz).



- ① 2.4GHz/5GHz signal strength LEDs.
- ② 2.4GHz/5GHz link/activity LED.
- ③ ETH1 port link/activity LED.
- ④ ETH0 (PoE) port link/activity LED.
- ⑤ Power LED.

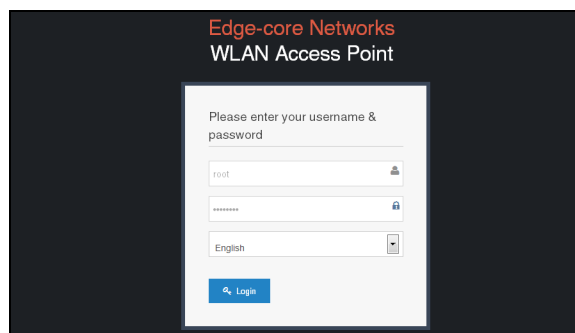
6. Connect to the Web User Interface

The stand-alone APs offer a web-based management interface for the configuration of all the unit's features.

You can make initial configuration changes by connecting a PC directly to the AP's ETH1 RJ-45 port. The AP has a default management IP address of 192.168.2.1 and a subnet mask of 255.255.255.0. You must set your PC IP address to be on the same subnet as the AP (that is, the PC and AP addresses must both start 192.168.2.x).

Log in to the web interface using the default settings:

- ◆ Login Name — root
- ◆ Password — admin123



For more information on stand-alone AP configuration using the web interface, refer to the *Management Guide*.

Hardware Specifications

Item	Specification
Chassis	
Size (H x W x D:)	283 x 94 x 50 mm (11.14 x 3.7 x 1.97 inches)
Weight	762 g (1.68 lb)
Temperature	Operating: -20 °C to 65 °C (-4 °F to 149 °F) Storage: -30 °C to 80 °C (-22 °F to 176 °F)
Humidity	Operating: 15% to 95% (non-condensing)
Waterproof/Dustproof	IP55
Network Interfaces	
Ports	ETH0 (PoE) RJ-45 Port: 1000BASE-T, passive PoE ETH1 RJ-45 Port: 100BASE-TX
2.4 GHz Radio	IEEE 802.11b/g/n
5 GHz Radio	IEEE 802.11a/n/ac
Radio Frequencies	2412 ~ 2472 MHz 5745 ~ 5825 MHz (China) 5180 ~ 5320 MHz (ETSI) 5500 ~ 5700 MHz (ETSI)
Power Supply	
PoE Input Power	24 VDC, 1.0 A
Power Consumption	24 W maximum
Power Injector Module	100-240 VAC, 50-60 Hz, auto-sensing
Regulatory Compliances	
Radio	EN 300 328 V1.8.1:2012 EN 301 893 V1.7.1:2012 EN 301 489-1 V1.9.2 (2011-09) EN 301 489-7 V1.3.1:2005 FCC Part 15C 15.247/15.207 (2.4-2.4835GHz, 5.725-5.850GHz) FCC Part 15E 15.407 (5.150GHz-5.250GHz)
Emissions	EN 55022 2010+AC:2011 EN 61000-3-2 2006+A1:2009+A2:2009 FCC Class B Part 15
Immunity	EN 55024 : 2010 EN 61000-4-2 : 2009