

CloudSwitch MGPlus 24 Full PoE

Cloud Managed 24-port 410W PoE+ Multi-Gigabit 2.5 Gb Switch with 4 x SFP+ Uplink Ports (ECS2528FP)

Introduction

This Quick Start Guide is designed to guide you through the installation of the **CloudSwitch MGPlus 24 Full PoE**, model **ECS2528FP**, including hardware installation and configuration.



CloudSwitch MGPlus 24 Full PoE

Cloud Managed 24-port 410W PoE+ Multi-Gigabit 2.5 Gb Switch with 4 x SFP+ Uplink Ports

Model: ECS2528FP

- 24 x 1G PoE+ (802.3af/at) Ports for for high-speed connections
- 4x 10G SFP+ uplink ports for bandwidth-intensive applications

∨ Content Quick Links

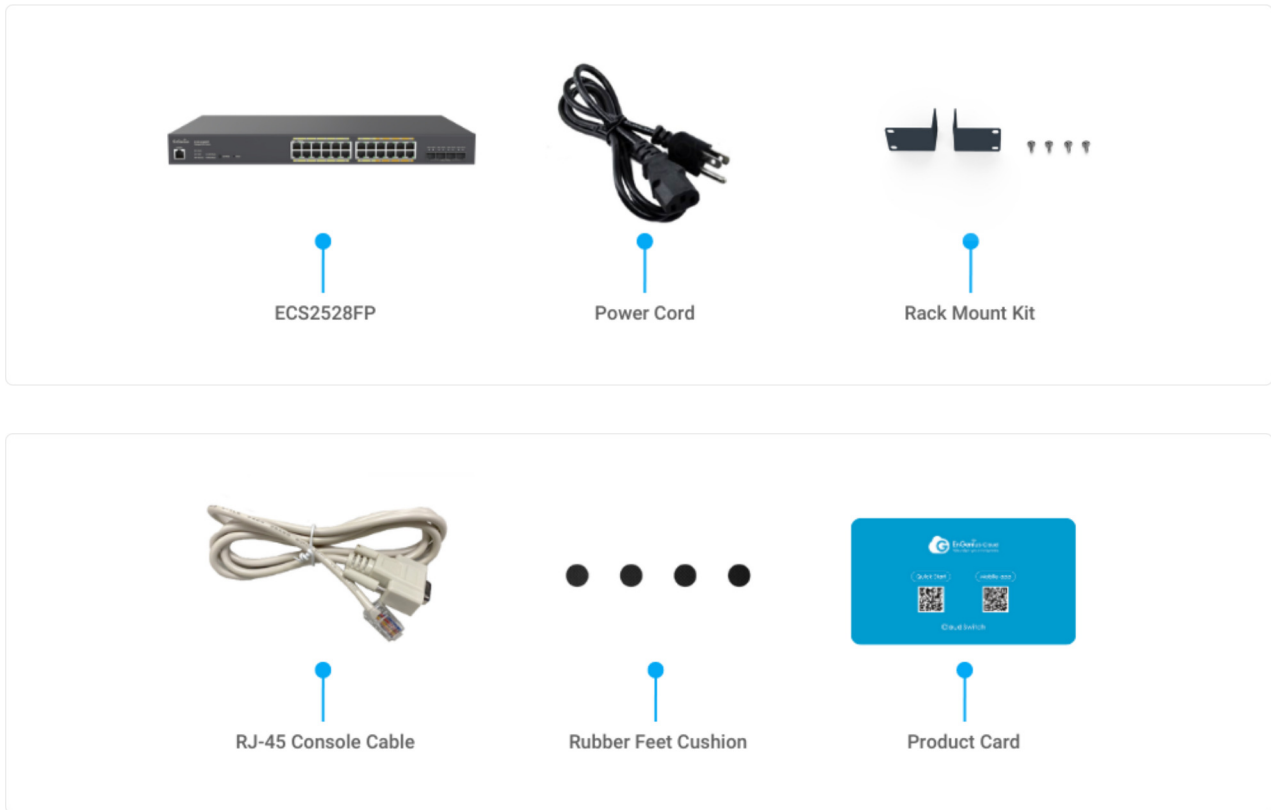
[Hardware Installation](#)

[Management Plane](#)

[Option A: Cloud Management](#)

[Option B: Standalone Configuration](#)

Package Contents



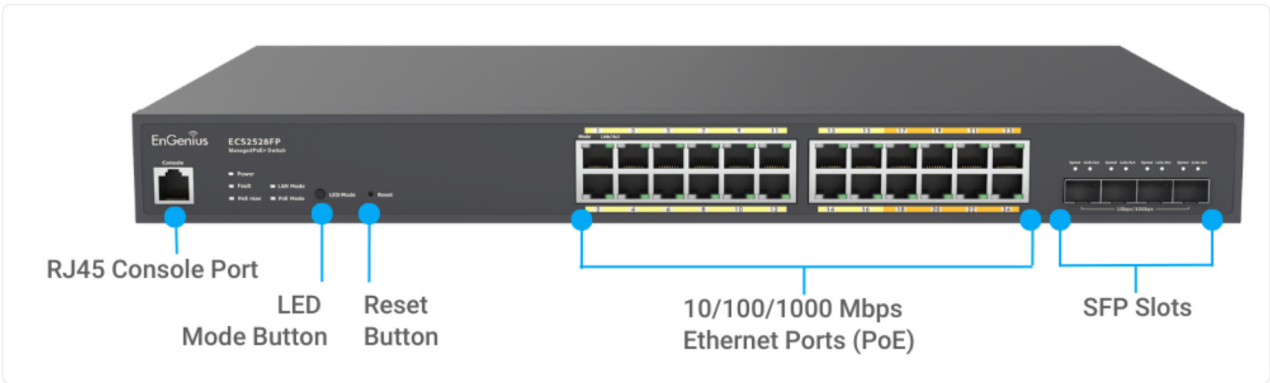
System Requirements

Web Browser:

- Google Chrome (57.0.2987.110 and later)
- Microsoft Edge (80.0.361.103 and later)
- Mozilla Firefox (52.0 and later)

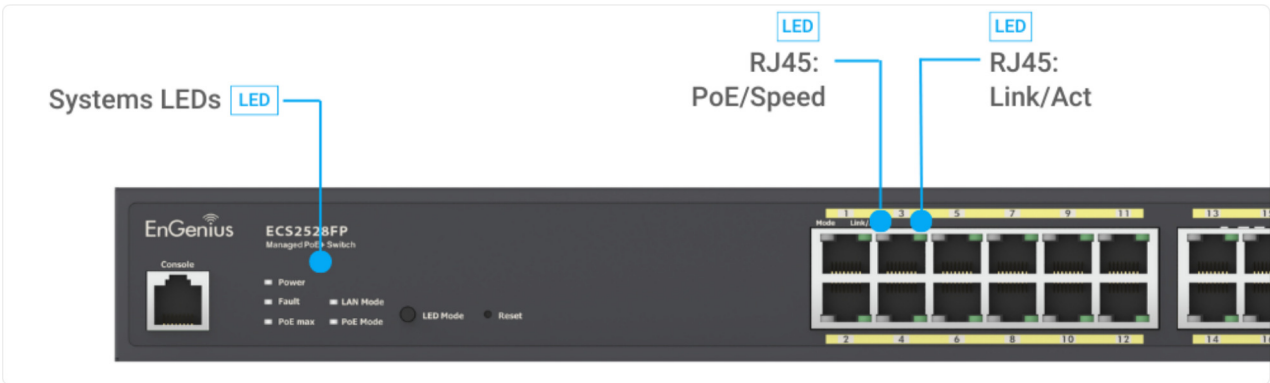
Hardware Overview

Front Panel - Ports & Buttons



- i
 • **Reset to default:** Press and hold for over **10 seconds**, and all ports LED will go off and on. Then the device will be reset to factory default settings.
- **Change LED display mode:** Press the button to change the LED mode to display the PoE status of PoE-abled ports.

Front Panel - System & Ports LEDs



Location	LED Indicator	LED Color	LED Behavior	Status
	Power	Green	Flashing	Before system boot
			Solid On	Power On
			Light Off	Power Off
			Yellow	Solid On

System	Fault	Amber	Solid On	Light Off	Normal
	PoE Max	Amber	Solid On	Light Off	When the total PoE output power achieves max power budget System still have spare power for new PD
			Solid On	Solid On	Select LED Mode to Ethernet Mode
	PoE Mode	Green	Solid On	Solid On	Select LED Mode to PoE Mode
Ethernet Port	LAN Mode	Green	Solid On	Solid On	Speed 1000Mbps
		Amber	Solid On	Solid On	Speed 100Mbps
		Off	Light Off	Light Off	Speed 10Mbps
	PoE Mode	Green	Solid On	Solid On	Power feeding
		Amber	Solid On	Solid On	Error Condition
		Off	Light Off	Light Off	No Power feeding
	Link/Act	Green	Solid On	Solid On	Link
		Amber	Flashing	Flashing	Transmit or receive on this port
	Off	Light Off	Light Off	No Link	
SFP Slot	Link/Act	Green	Solid On	Solid On	Link
			Flashing	Flashing	Transmit or receive on this port
			Light Off	Light Off	No Link