



# UAG4100 Deployment Guide

Initial Configurations of UAG4100 and SP350E Ticket Printer

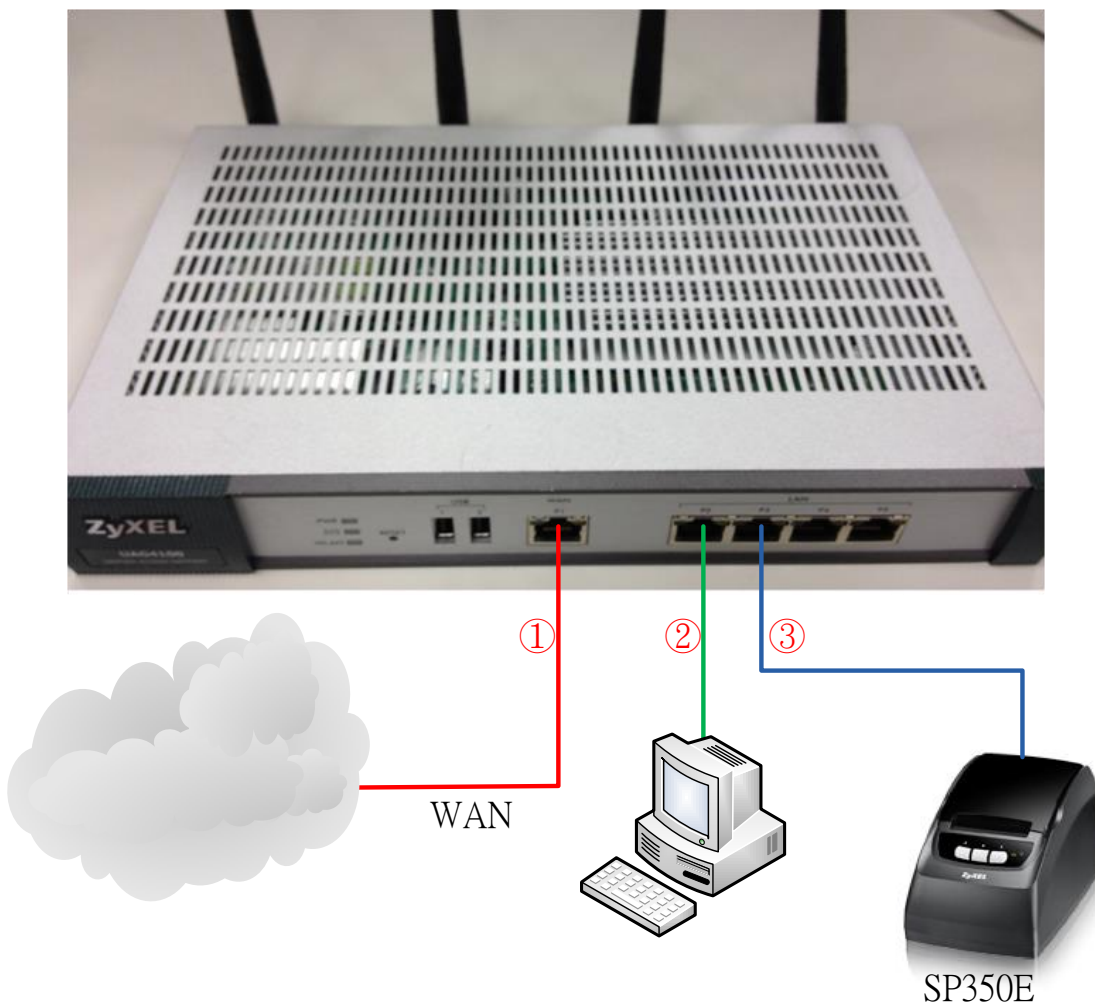




SP350E is the thermal ticket printer designed to work with ZyXEL's new generation HotSpot Gateway UAG4100. It is with 3 buttons that business owners can easily print out the account and service billing information which are generated or configured in UAG4100. With this dedicated ticket printer, business owners who provide public Internet service can perform with least effort and win customer satisfaction.

This deployment guide is to demonstrate how to set up the SP350E working with UAG4100 step by steps. For further information, please contact ZyXEL technical support teams in your nearby regions or go to [http://www.zyxel.com/form/Support\\_Feedback.shtml](http://www.zyxel.com/form/Support_Feedback.shtml) for information.

### Step 1. Setup the UAG4100 environment.

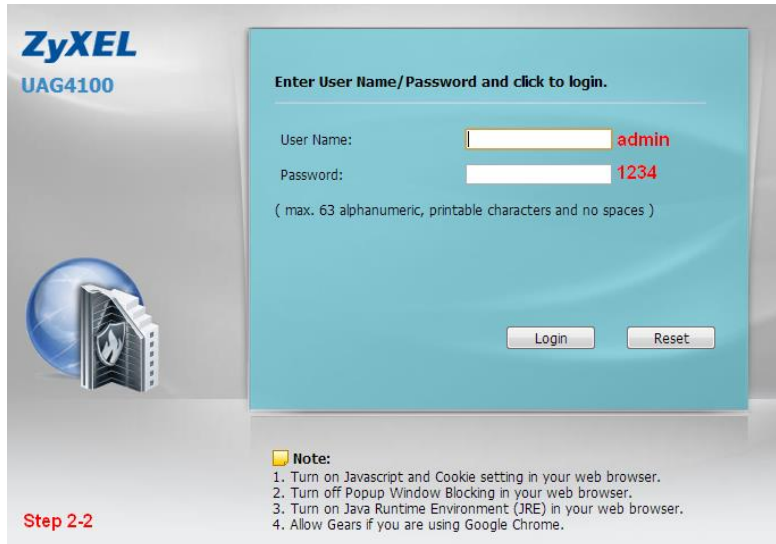


- (1) The P1 port connects the cable to your Internet Service Provider.
- (2) The P2 port connects to your PC directly.
- (3) The P3 port connects to the SP350E.

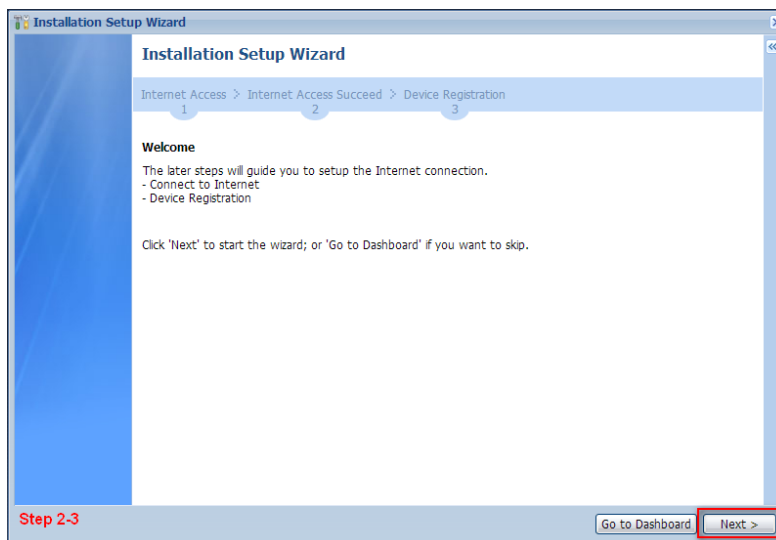


## Step 2. Setup the Internet connection.

- (1) The PC NIC setting is DHCP client and the default gateway will be 172.16.0.1.
- (2) Use a web browser and enter <http://172.16.0.1> to access the UAG4100's login GUI (user: admin/password:1234).



- (3) After logging into the UAG's GUI, you will see the "Installation Setup Wizard", and then click on the "Next" button.

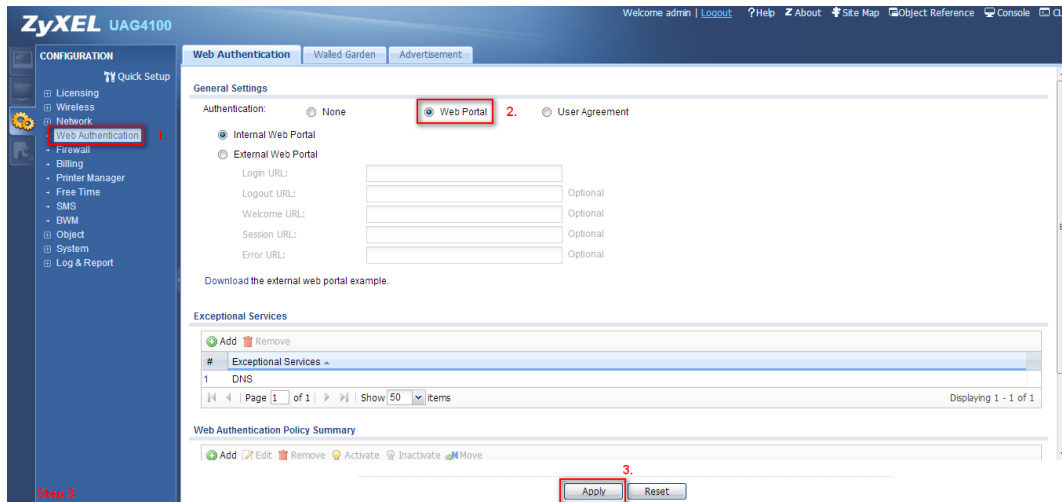


- (4) Select your Internet Service Provider parameters (on the UAG, there are 3 types: Ethernet, PPPoE, and PPP).
- (5) After configuring the Internet connection setting, you can click on the "Finish" button to complete the Wizard Setup.



### Step 3. Set up authentication on LAN2.

- (1) Go to Configuration > Web Authentication.
- (2) Enable the "Web Portal" check box.
- (3) Click on the "Apply" button.



Note: If you have a printer, please refer to Step 4-1. If not please refer to Step 4-2.

## Step 4-1. Setup your printer

SP350E printer will be assigned an IP address by the DHCP by default. First, you need to verify the IP address of the printer.

- (1) Please turn over the printer. You can see the **printer MAC address** label at the bottom.
- (2) Please **record printer MAC on memo**.



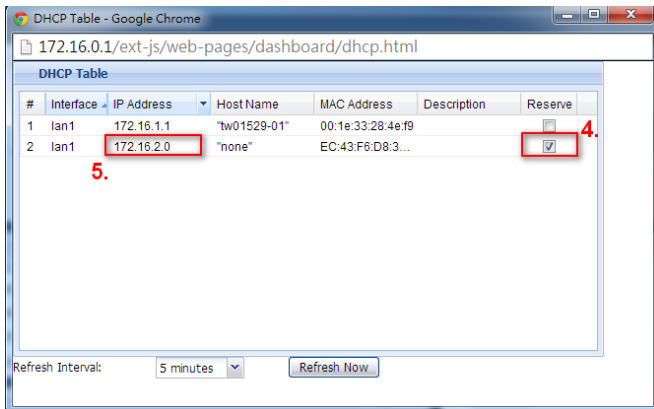
- (3) Go to Dashboard. Click on "DHCP Table".



- (4) **Mapping the printer MAC address** – this is what you have recorded in Step 4-1-(2) ). If correct, enable the "Reserve" checkbox.

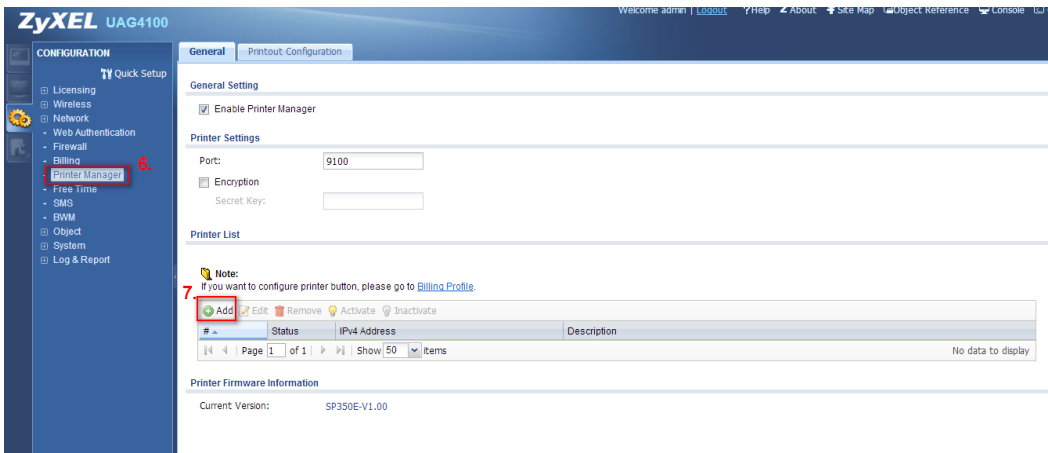


(5) **Write down the printer IP** - in this document, the IP address is 172.16.2.0. The real IP address depends on your system assignment.



(6) Go to Configuration > Printer Manager.

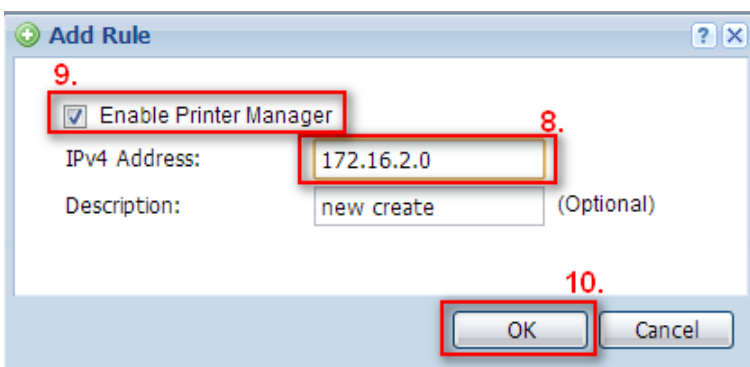
(7) Click on the "Add" button to add the IP address of the printer.



(8) Enter printer IP address (the IP address from Step 4-1-(5)).

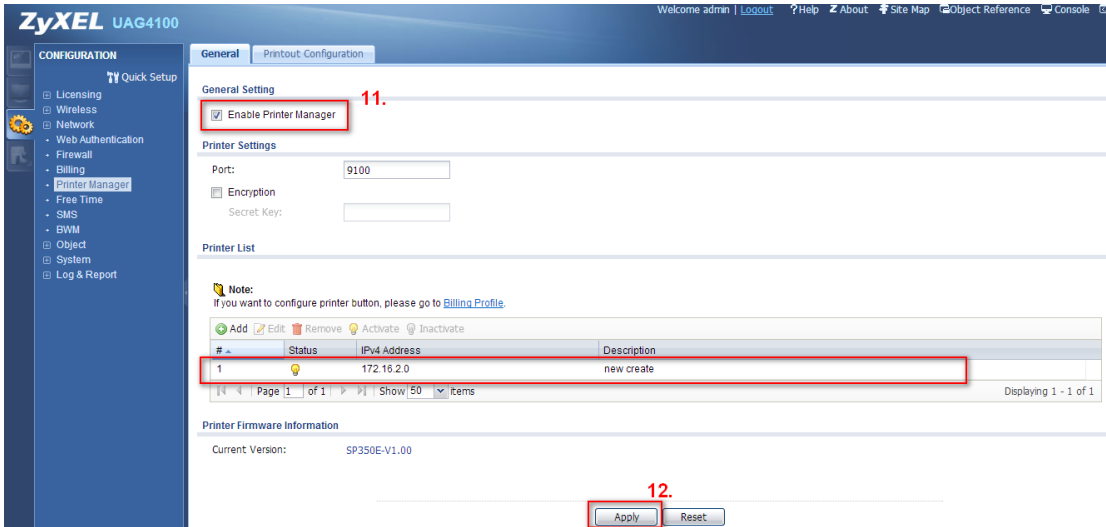
(9) Enable the "Enabled Printer Manager" check box.

(10) Click on the "OK" button.





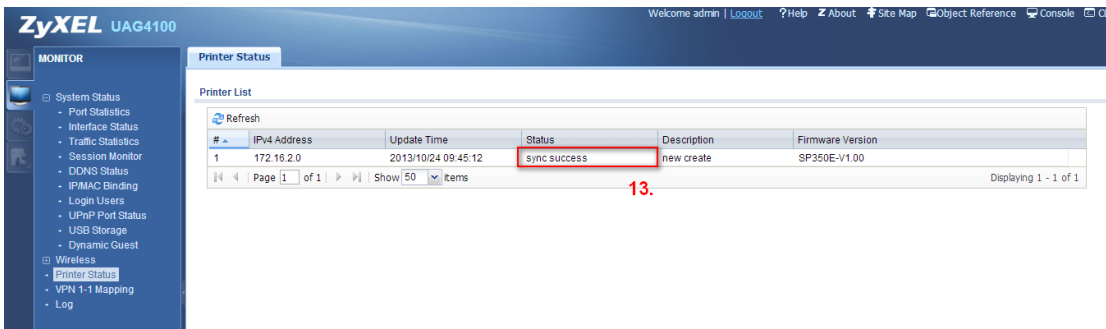
(11) Go back to the General Setting page, enable the "Enabled Printer Manager" check box.



(12) Click on the "Apply" button.

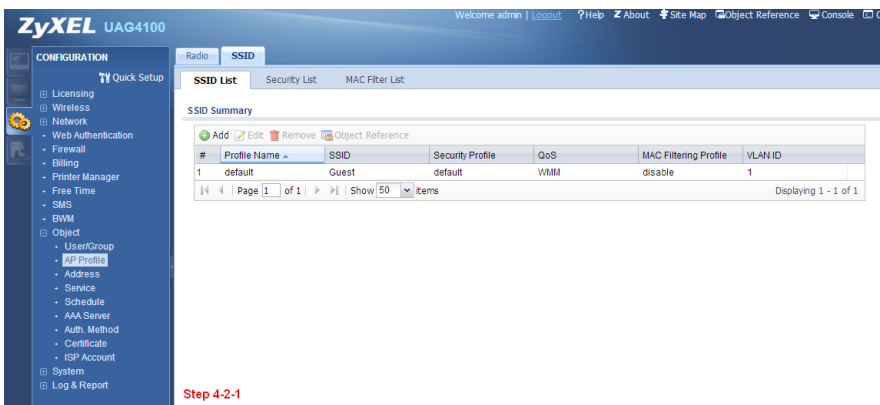
(13) Monitor -> Printer status - confirm that the printer status is "sync success". If the status is not ready, please repeat Step 4-1.

\*user might wait up 90 seconds to sync printer successfully when apply the configuration.



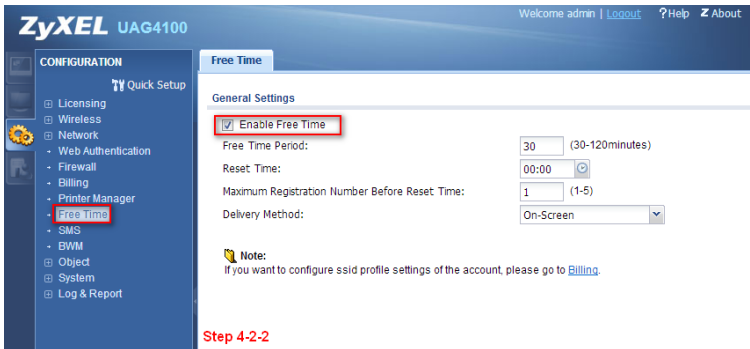
## Step 4-2. Setup the Free Time.

(1) Go to CONFIGURATION -> Object -> AP Profile -> SSID. Confirm the SSID name. The default Profile Name is "Guest".





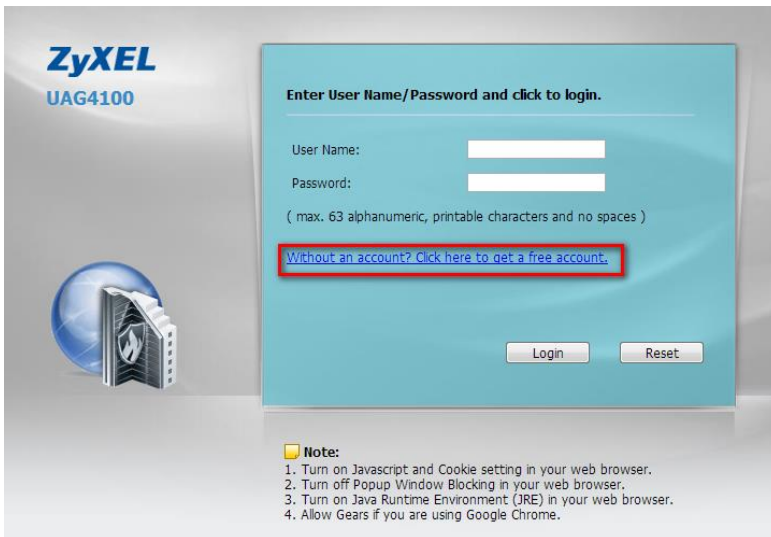
(2) Go to CONFIGURATION -> Free Time. Enable Free Time and fill in the condition. Note: The free time period is configurable.



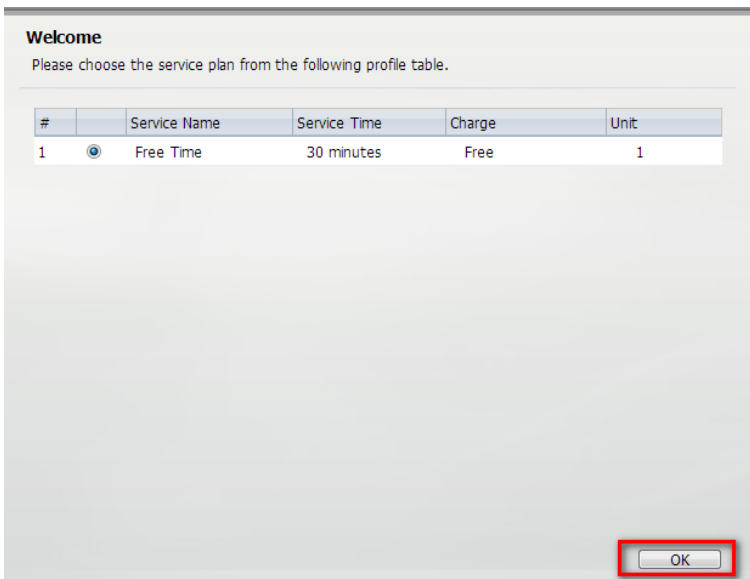
Step 4-2-2

After using Free time.

(1) The end user will be redirected to this page. Ask the end user to click on the link.



(2) Then the user will go to the Free Time page and click on the "OK" button.







(3) The user will get the Internet service login account/ password / time period.

**Welcome**

---

You may now use the internet.

**IMPORTANT! MAKE a note for your case-sensitive username and password for logging later. This will be your only opportunity to do so.**

This is your account information, please keep this for your internet service.

Your username is **ftajpk**  
Your password is **kj28d2**  
Your time period is **30 minutes**

[Login Now](#)