

# Quick Start Guide

802.11a/ac/b/g/n Wireless Access Point

ECW5212

## 1. Unpack the AP and Check Contents



ECW5212  
802.11a/ac/b/g/n  
Wireless Access Point



AC power adapter



Four adhesive rubber feet



Documentation—*Quick Start Guide* (this document) and *Safety and Regulatory Information*

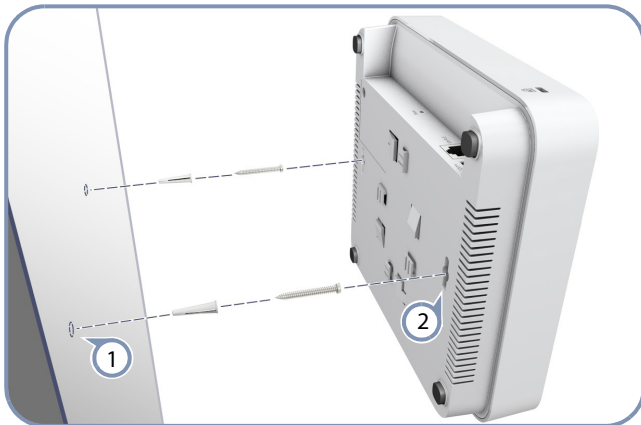
**i** **Note:** For safety and regulatory information, refer to the *Safety and Regulatory Information* document included with the AP.

## 2. Mount the AP

The AP can be mounted on a desktop, wall, or ceiling T-bar.

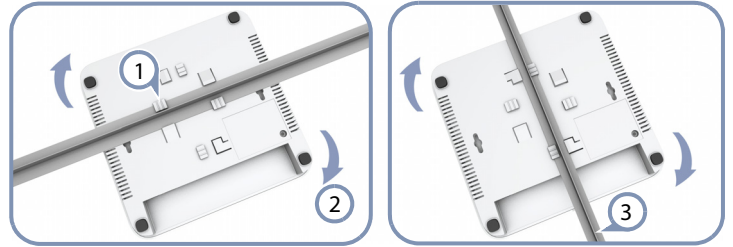
**i** **Note:** The AP can be placed on a desktop using the included rubber feet. When mounting the AP on a wall or ceiling, do not attach the rubber feet.

### a. Mounting on a Wall



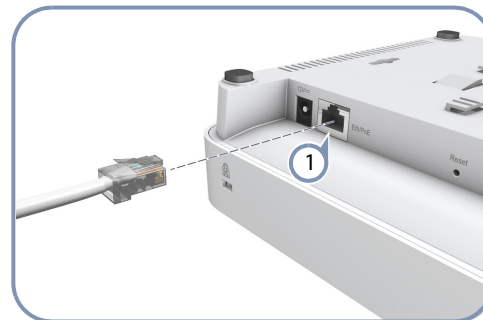
- 1 Set two screws in the wall 140 mm (5.51 in.) apart.
- 2 Slide the AP's wall mounting slots down onto the screws so that the unit is secure.

### b. Mounting on a Ceiling T-Bar



- 1 Position the AP's ceiling-mount clip holders on either side of the T-bar.
- 2 Turn the AP until the two clips lock it to the T-bar.
- 3 The AP mounting supports two different sizes of suspended ceiling T-bars. The position illustrated above left is for 15 mm bars. Use the position at a 90 degrees angle for 24.5 mm bars.

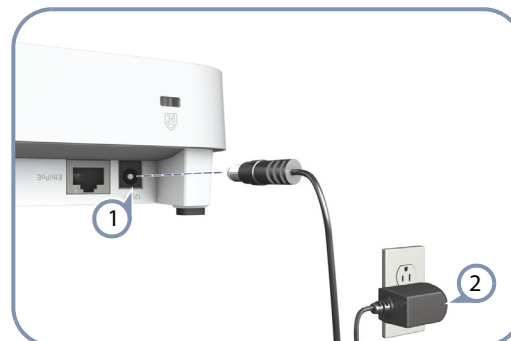
## 3. Connect LAN Cable



- 1 Connect Category 5e or better cable to the Eth/PoE 1000BASE-T RJ-45 port.

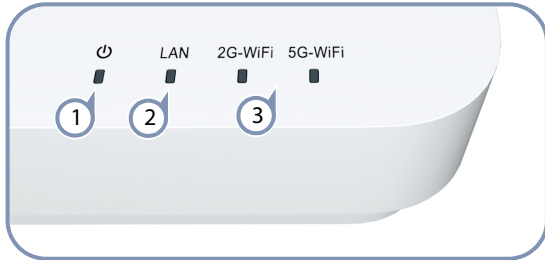
**i** **Note:** The Eth/PoE port connection can also provide PoE power to the unit.

## 3. (Optional) Connect AC Power Adapter



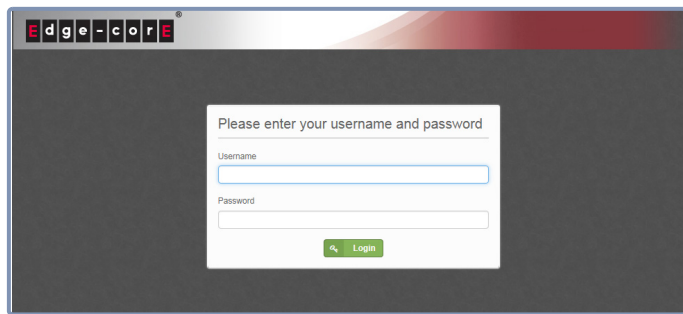
- 1 Connect the power adapter to the power socket on the AP.
- 2 Plug the power adapter into a nearby AC power source.

## 4. Verify AP Operation



- ① Power — on red for normal operation.
- ② LAN — on/blinking green for a valid RJ-45 port link.
- ③ 2G-WiFi/5G-WiFi — on/blinking green for radio enabled.

## 5. Connect to the Web User Interface



- ① Connect a PC directly to the AP's LAN port.
- ② Set the PC IP address to be on the same subnet as the AP (that is, the PC and AP addresses must both start 192.168.1.x with subnet mask 255.255.255.0).
- ③ Enter the AP's default management IP address of 192.168.1.1 into the web browser address bar.
- ④ Log in to the web interface using default settings:  
User Name = root  
Password = admin123

**i Note:** To reset the AP to factory defaults, press the Reset button for more than 5 seconds.

**Note:** For more information on AP configuration using the web interface, refer to the *Management Guide*, which is on the Edgecore web site, [www.edge-core.com](http://www.edge-core.com).

## Hardware Specifications

### Chassis

Size (W x D x H)	196 x 190 x 53 mm (7.72 x 7.48 x 2.09 inch)
Weight	554.2 g (1.22 lb)
Temperature	Operating: 0 °C to 45 °C (32 °F to 113 °F) Storage: -40 °C to 70 °C (-40 °F to 158 °F)
Humidity	Operating: 5% to 95% (non-condensing)

### Network Interfaces

Ports	Eth/PoE RJ-45 Port: 1000BASE-T, PoE PD
2.4 GHz Radio	IEEE 802.11b/g/n
5 GHz Radio	IEEE 802.11a/ac/n
Radio Frequencies	2.4 – 2.4835 GHz (US, Canada, ETSI) 2.412 – 2.462 GHz (NCC) 5.15 – 5.25 GHz (lower band) US/Canada, Europe 5.725 – 5.825 GHz (upper band) US/Canada 5.280 – 5.320 GHz (NCC) 5.745 – 5.825 GHz (NCC)

### Power Supply

PoE Input Power	48 VDC, 802.3af-standard compliant
AC Power Adapter	AC Input: 100 ~ 240 VAC, 50/60 Hz DC Output: 12 VDC, 1 A
Power Consumption	11 W maximum

### Regulatory Compliances

Radio	EN 300 328 V1.9.1 (2015-02) EN 301 893 V1.8.1 (2015-03) EN 301 489-1 V1.9.2 (2011-09) EN 301 489-7 V2.2.1 (2012-09) FCC Part 15C 15.247/15.207 (2.4-2.4835GHz, 5.725-5.850GHz) 2014 FCC Part 15E 15.407 (5.150GHz-5.250GHz) 2014 NCC LP0002
Emissions	EN 55022 2010+AC:2011 EN 61000-3-2:2014 FCC Class B Part 15, 2014 CNS 13438
Immunity	EN 55024 : 2010 EN 61000-4-2 : 2009
Safety	UL (CSA 22.2 No. 60950-1 & UL60950-1) CB (IEC/EN60950-1) BSMI (CNS 14336-1)