



# Gigabit Ethernet SFP Transceiver Modules

## Reliable, high-performance SFP transceiver modules for Gigabit Ethernet applications



EnGenius Small Form-Factor Pluggable (SFP) transceiver is an industry standard hot-swappable device that plugs into the SFP port or slot and links the port with the network. It is small form factor pluggable module with standard LC duplex connector for fiber communications. It designed to compliant to SFI electrical specifications.

### Features

- > Hot pluggable LC Duplex connector
- > IEEE 802.3z compliant
- > Industry standard compliance
- > Low power dissipation
- > Class 1 laser product, complies with International Safety Standard IEC 825
- > ROHS Compliant

## 1G SFP Series

	SFP2185-05	SFP2213-10
Connector Type	LC	LC
Data Rate	1.25Gbps	1.25Gbps
Wavelength	850nm	1310nm
Fiber Type	MMF	SMF
Max Transmission Distance	0.5km	10km
Transmitter Characteristics		
Supply Voltage	3.15 ~ 3.45V	3.15 ~ 3.45V
Supply Current	160mA	160mA
Output Optical Power	-10 ~ -3dBm	-9 ~ -2dBm
Receiver Characteristics		
Supply Voltage	3.15 ~ 3.45V	3.15 ~ 3.45V
Supply Current	100mA	100mA
Maximum Receiver Power	-3dBm	-3dBm
Optical Receiver Sensitivity	-18dBm	-20dBm
Physical Specifications		
Dimensions (WxDxH)	13.72 x 56.64 x 12.43mm	
Weight	25g	
Environmental Limits		
Operating Temperature	0°C to 70°C (32°F to 158°F)	
Storage Temperature	-40°C to 85°C (-40°F to 185°F)	



## 1G SFP Bi-Di Series

	SFP2313-20	SFP2315-20
Connector Type	LC	LC
Data Rate	1.25Gbps	1.25Gbps
Wavelength	Tx: 1310nm Rx:1550nm	Tx: 1550nm Rx:1310nm
Fiber Type	SMF	SMF
Max Transmission Distance	20km	20km
Transmitter Characteristics		
Supply Voltage	3.15 ~ 3.45V	3.15 ~ 3.45V
Supply Current	160mA	160mA
Output Optical Power	-8 ~ -2dBm	-8 ~ -2dBm
Receiver Characteristics		
Supply Voltage	3.15 ~ 3.45V	3.15 ~ 3.45V
Supply Current	100mA	100mA
Maximum Receiver Power	-3dBm	-3dBm
Optical Receiver Sensitivity	-23dBm	-23dBm
Physical Specifications		
Dimensions (WxDxH)	13.72 x 56.64 x 12.43mm	
Weight	25g	
Environmental Limits		
Operating Temperature	0°C to 70°C (32°F to 158°F)	
Storage Temperature	-40°C to 85°C (-40°F to 185°F)	

	<b>SFP2314-20A</b>
Connector Type	LC
Data Rate	1.25Gbps
Wavelength	Tx: 1490nm Rx:1310nm
Fiber Type	SMF
Max Transmission Distance	20km
<b>Transmitter Characteristics</b>	
Supply Voltage	3.15 ~ 3.45V
Supply Current	160mA
Output Optical Power	-8 ~ -2dBm
<b>Receiver Characteristics</b>	
Supply Voltage	3.15 ~ 3.45V
Supply Current	100mA
Maximum Receiver Power	-3dBm
Optical Receiver Sensitivity	-23dBm
<b>Physical Specifications</b>	
Dimensions (WxDxH)	13.72 x 56.64 x 12.43mm
Weight	25g
<b>Environmental Limits</b>	
Operating Temperature	0°C to 70°C (32°F to 158°F)
Storage Temperature	-40°C to 85°C (-40°F to 185°F)



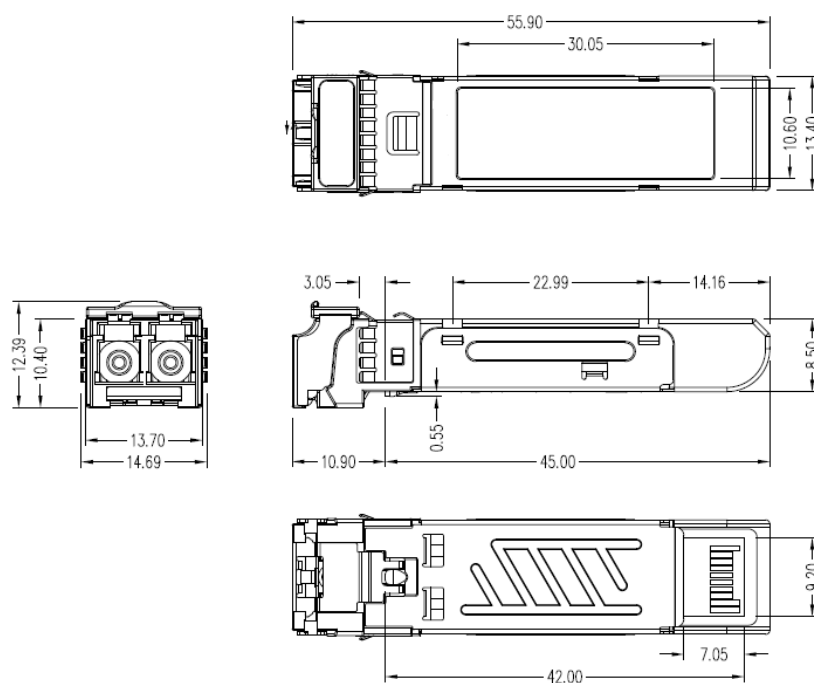
## 1G SFP Fiber to Cooper

	<b>SFP2500</b>
Connector Type	RJ-45
Data Rate	1.25Gbps
Max Transmission Distance	100m
Supply Maximum Current	375mA
Input Voltage	3.13 ~ 3.47V
Dimensions (WxDxH)	12 x 68 x 14mm
Weight	24.5 g
<b>Environmental Limits</b>	
Operating Temperature	-20°C to 75°C (-4°F to 167°F)
Storage Temperature	-40°C to 85°C (-40°F to 185°F)



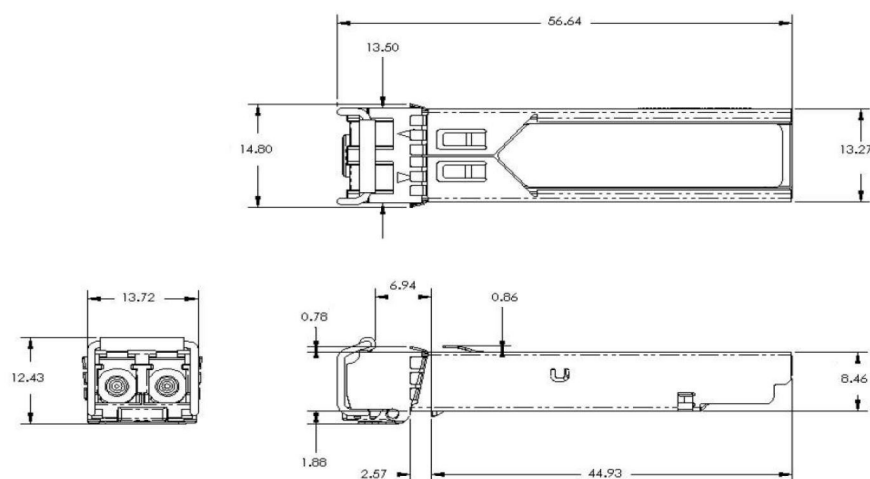
## Dimensions

### 1G SFP Series



Unit: mm

### 1G SFP Bi-Di Series

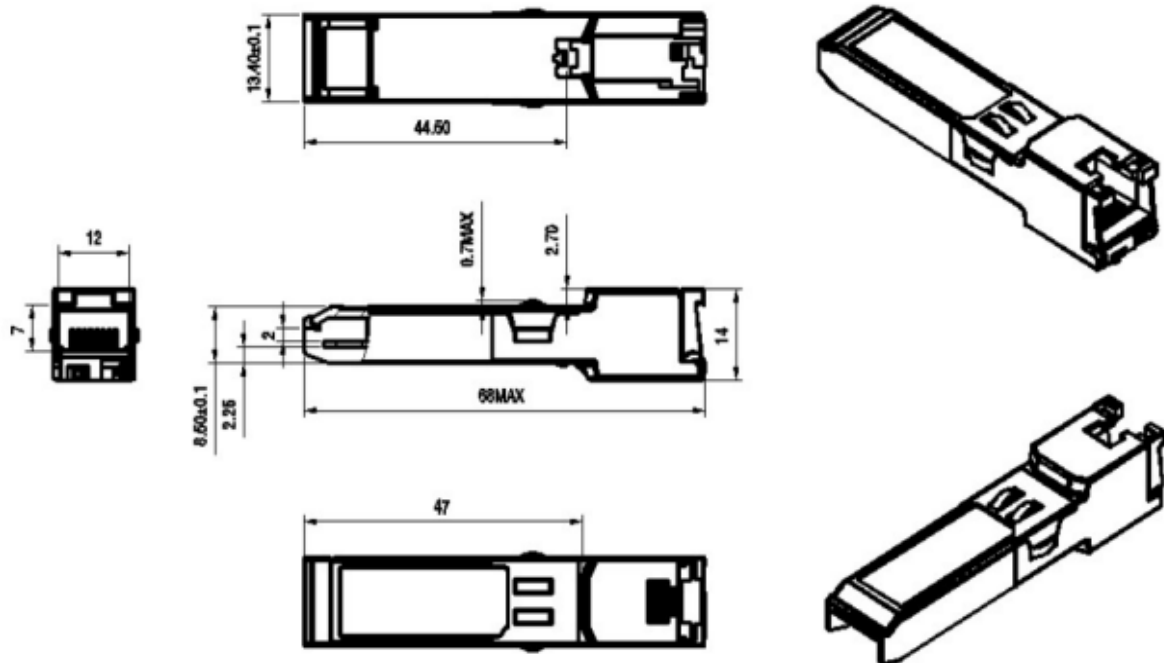


Unit: mm



## Dimensions

### 1G SFP Fiber to Cooper Series



Unit: mm



## Ordering Information

Product No.	Product Description
<b>10G SFP+ Transceivers</b>	
SFP3185-03	10G BASE-SX SFP+ Transceiver, 850nm; 0.3km
SFP3185-03A	10G BASE-SX SFP+ Transceiver, 850nm; 0.3km (Made in China)
SFP3213-10	10G BASE-LX SFP+ Transceiver, 1310nm; 10km
SFP3213-10A	10G BASE-LX SFP+ Transceiver, 1310nm; 10km (Made in China)
SFP3312-20	10G BASE-LX SFP+ Bi-Di Transceiver, Tx:1270nm / Rx:1330nm; 20km
SFP3312-20A	10G BASE-LX SFP+ Bi-Di Transceiver, Tx:1270nm / Rx:1330nm; 20km (Made in China)
SFP3313-20	10G BASE-LX SFP+ Bi-Di Transceiver, Tx:1330nm / Rx:1270nm; 20km
SFP3313-20A	10G BASE-LX SFP+ Bi-Di Transceiver, Tx:1330nm / Rx:1270nm; 20km(Made in China)
SFP3500	10G BASE, Fiber to cooper, 30M
<b>10G DAC Cable</b>	
DAC1130-01	10G Direct Attach Copper Cable, passive , 1 meter
DAC1130-03	10G Direct Attach Copper Cable, passive , 3 meter
DAC1130-05	10G Direct Attach Copper Cable, passive , 5 meter
<b>1G SFP Transceiver</b>	
SFP2185-05	1000BASE-SX SFP Transceiver, 850nm; 0.5km
SFP2185-05A	1000BASE-SX SFP Transceiver, 850nm; 0.5km (Made in China)
SFP2213-10	1000BASE-LX SFP Transceiver, 1310nm; 10km
SFP2213-10A	1000BASE-LX SFP Transceiver, 1310nm; 10km (Made in China)
SFP2313-20	1000BASE-LX SFP Bi-Di Transceiver, Tx:1310nm / Rx:1550nm; 20km
SFP2313-20A	1000BASE-LX SFP Bi-Di Transceiver, Tx:1310nm / Rx:1550nm; 20km (Made in China)
SFP2314-20A	1000BASE-LX SFP Bi-Di Transceiver, Tx:1490nm / Rx:1310nm; 20km (Made in China)
SFP2315-20	1000BASE-LX SFP Bi-Di Transceiver, Tx:1550nm / Rx:1310nm; 20km
SFP2500	1000BASE, Fiber to Cooper, 100M

HQ , Taiwan  
www.EnGeniusnetworks.com  
Costa Mesa, California, USA | (+1) 714 432 8668  
www.EnGeniustech.com

Singapore | (+65) 6227 1088  
www.EnGeniustech.com.sg  
Eindhoven, Netherlands | (+31) 40 8200 888  
www.EnGeniusnetworks.eu  
Dubai, UAE | (+971) 4 357 5599  
www.EnGenius-me.com



Features and specifications subject to change without notice. Trademarks and registered trademarks are the property of their respective owners. For United States of America: Copyright © 2018 EnGenius Technologies, Inc. All rights reserved. Compliant with FCC - This equipment has been tested and found to comply with the limits for a Class B digital device, pursuant to Part 15 of the FCC Rules. These limits are designed to provide reasonable protection against harmful interference in a residential installation. This equipment generates, uses, and can radiate radio frequency energy and, if not installed and used in accordance with the instructions, may cause harmful interference to radio communications. Operation of this equipment in a residential area is likely to cause harmful interference in which case the user will be required to correct the interference at his/her own expense. Prior to installing any surveillance equipment, it is your responsibility to ensure the installation is in compliance with local, state and federal video and audio surveillance and privacy laws.

Version 1.2— 03/20/2024



## Ordering Information

Product No.	Product Description
<b><i>FIT Managed Switch</i></b>	
EWS2910P-FIT	EnGenius Fit 8-Port 55W Gigabit PoE+ Switch with 2 SFP Ports
EWS2910FP-FIT	EnGenius Fit 8-Port 110W Gigabit PoE+ Switch with 2 SFP Ports
EWS7928P-FIT	EnGenius Fit 24-Port 240W Gigabit PoE+ Switch with 4 SFP Ports
EWS7928FP-FIT	EnGenius Fit 24-Port 410W Gigabit PoE+ Switch with 4 SFP Ports
EWS7952P-FIT	EnGenius Fit 48-Port 410W Gigabit PoE+ Switch with 4 SFP Ports
EWS7952FP-FIT	EnGenius Fit 48-Port 740W Gigabit PoE+ Switch with 4 SFP Ports
<b><i>Cloud Management Switch</i></b>	
ECS1008P	Cloud Managed Gigabit 8-Port Gigabit 55W PoE+ Switch
ECS1112FP	Cloud Managed Gigabit 8-Port Gigabit 130W PoE+ Switch with 2GbE and 2 SFP Ports
ECS1528T	Cloud Managed Gigabit 24-Port Gigabit Switch with 4 SFP+ Ports
ECS1528P	Cloud Managed Gigabit 24-Port Gigabit 240W PoE+ Switch with 4 SFP+ Ports
ECS1528FP	Cloud Managed Gigabit 48-Port Gigabit 410W PoE+ Switch with 4 SFP+ Ports
ECS1552	Cloud Managed Gigabit 48-Port Gigabit Switch with 4 SFP+ Ports
ECS1552P	Cloud Managed Gigabit 48-Port Gigabit 410W PoE+ Switch with 4 SFP+ Ports
ECS1552FP	Cloud Managed Gigabit 48-Port Gigabit 740W PoE+ Switch with 4 SFP+ Ports
ECS2512	Cloud Managed 8-Port Multi-Gigabit 2.5G Switch with 4 SFP+ Ports
ECS2510FP	Cloud Managed 8-Port Multi-Gigabit 2.5G 240W PoE+ Switch with 2 SFP+ Ports
ECS2512FP	Cloud Managed 8-Port Multi-Gigabit 2.5G 240W PoE++ Switch with 4 SFP+ Ports
ECS2528FP	Cloud Managed 24-Port Multi-Gigabit 2.5G 410W PoE+ Switch with 4 SFP+ Ports
ECS2552FP	Cloud Managed 48-Port Multi-Gigabit 2.5G 740W PoE+ Switch with 4 SFP+ Ports
ECS5512	Cloud Managed 8-Port 10 - Gigabit Switch with 4 SFP+ Ports
ECS5512FP	Cloud Managed 8-Port 10 - Gigabit 420W PoE++ Switch with 4 SFP+ Ports
ECS5512F	Cloud Managed Switch with 12 SFP+ Ports
<b><i>Switch Extender</i></b>	
EXT1106	Cloud Managed 5-Port Gigabit Switch Extender and 1 SFP
EXT1109P	Cloud Managed 8-Port Gigabit PoE+ Switch Extender and 1 SFP

HQ, Taiwan  
[www.EnGeniusnetworks.com](http://www.EnGeniusnetworks.com)  
 Costa Mesa, California, USA | (+1) 714 432 8668  
[www.EnGeniustech.com](http://www.EnGeniustech.com)

Singapore | (+65) 6227 1088  
[www.EnGeniustech.com.sg](http://www.EnGeniustech.com.sg)  
 Eindhoven, Netherlands | (+31) 40 8200 888  
[www.EnGeniusnetworks.eu](http://www.EnGeniusnetworks.eu)  
 Dubai, UAE | (+971) 4 357 5599  
[www.EnGenius-me.com](http://www.EnGenius-me.com)



Features and specifications subject to change without notice. Trademarks and registered trademarks are the property of their respective owners. For United States of America: Copyright © 2018 EnGenius Technologies, Inc. All rights reserved. Compliant with FCC - This equipment has been tested and found to comply with the limits for a Class B digital device, pursuant to Part 15 of the FCC Rules. These limits are designed to provide reasonable protection against harmful interference in a residential installation. This equipment generates, uses, and can radiate radio frequency energy and, if not installed and used in accordance with the instructions, may cause harmful interference to radio communications. Operation of this equipment in a residential area is likely to cause harmful interference in which case the user will be required to correct the interference at his/her own expense. Prior to installing any surveillance equipment, it is your responsibility to ensure the installation is in compliance with local, state and federal video and audio surveillance and privacy laws.

Version 1.2— 03/20/2024