

Navigator for Wireless Management Solution

In order to effectively manage multiple EWS Switches at once, Navigator for Wireless Management Solution allow users to monitor the status of their EWS devices from one central dashboard.

A. Installing the software

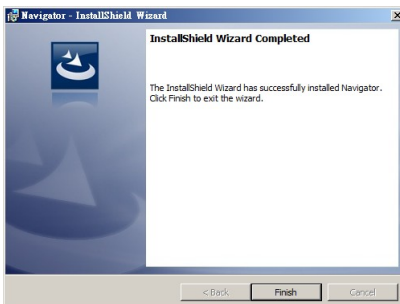
1. Double-click on setup.exe to start installing.



2. Follow the onscreen instructions to install the software.



3. Once the installation is complete, click on *Finish* to proceed.

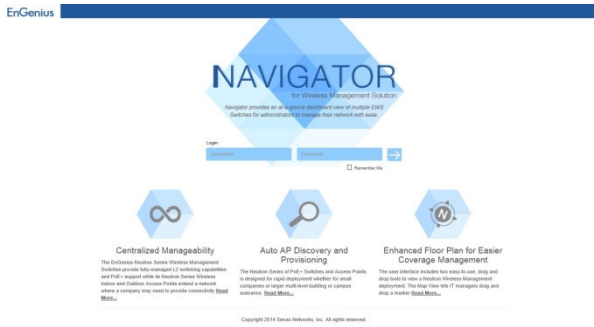


B. Launching the software

1. Click on the *Navigator* icon on your desktop to launch the program.



2. The default browser will launch and you'll be redirected to Navigator's Login page.




3. Enter the username and password then click ➔ to login. The default username is **admin** and the default password is **password**.

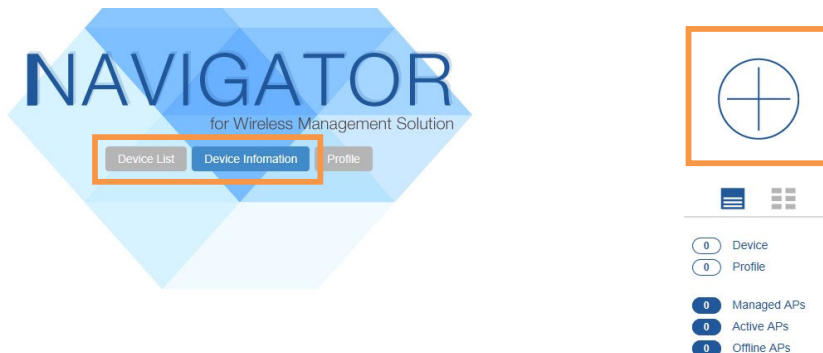
Login

admin ➔

Remember Me

C. Adding a new device

1. While under the *Device List* or *Device Information* Tab, click on the  located on the right of the page.



2. Enter the Device Name (user defined name for this device), IP Address (or DDNS), Port and username/password of the EWS Switch. Click on *Apply* when done.

*Make sure that your EWS switch has an active Internet connection.

Add Device ✕

Device Name:

IP Address:

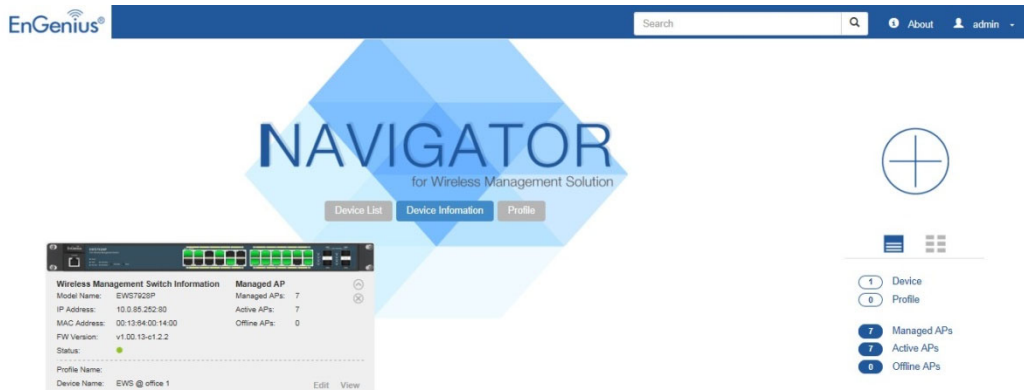
Port:

HTTP/HTTPS: HTTP HTTPS

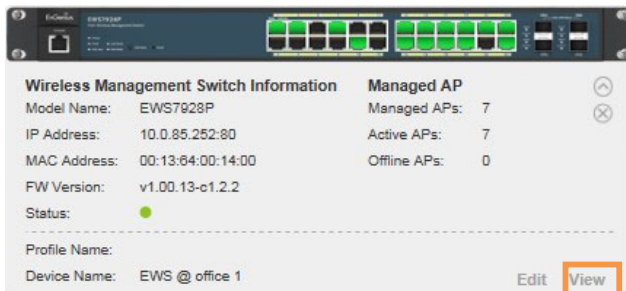
User Name:

Password:


- If the connection details entered are correct, after around 10 seconds, the EWS Switch will be manageable from the Navigator dashboard. The status of the EWS Switches will be automatically updated every 15 seconds.

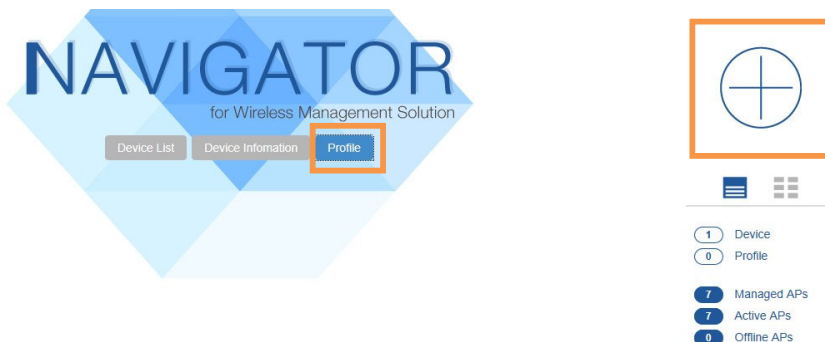


- Click on *View* button on the device card to redirect to the EWS Switch's GUI.

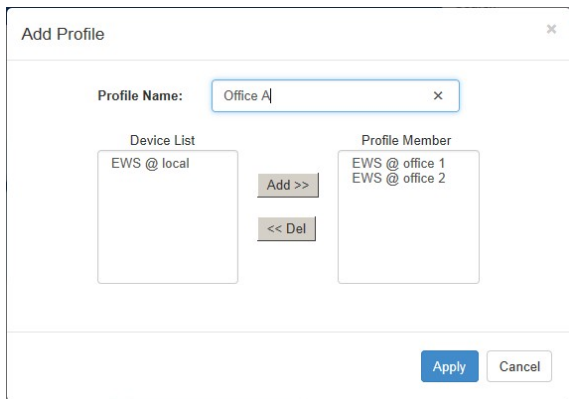


D. Adding a new profile

- While under the *Profile* Tab, click on the  on the right of the page.



- Enter the Profile Name (user defined name for this profile), and select which devices you wish to add to this profile. Click on *Apply* when done.



3. A new profile card will appear. Click on *View* button or the image of the switch to see the list of EWS Switches in this profile.



4. Click on *View* button or image of the switch to redirect to the EWS Switch's GUI.

