

Quick Installation Guide

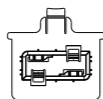
Package Contents



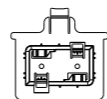
Access Point



Quick Installation Guide



Ceiling Mount Base
(9/16" T-Rail)



Ceiling Mount Base
(1.5/16" T-Rail)



Mounting kit

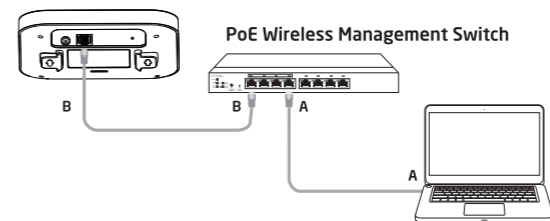
Minimum Requirements

- + Broadband Internet Service
(Cable or DSL Modem)
- + Internet Browser
(Internet Explorer, Safari, Firefox, Chrome, Edge)
- + EnGenius Wireless Management L2 Switch
(To use with EWS Series Management Switches)

Managed Access Point Installation with Wireless Management Switch

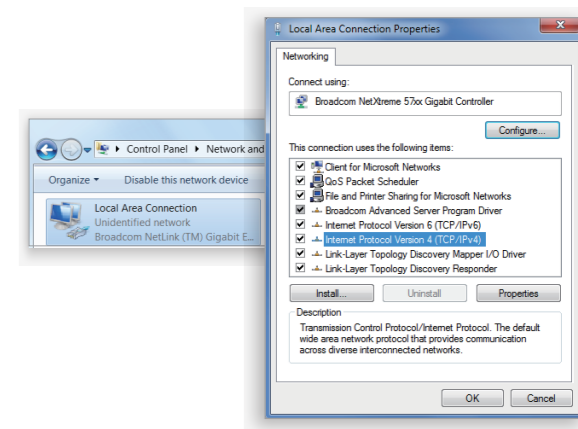
1 Connecting the Access Point (Through EnGenius Wireless Management Switch)

- A) Connect one end of the **Ethernet Cable** into an **Ethernet Port** on the front panel of the EnGenius Wireless Management Switch and the other end to the Ethernet Port on the computer.
- B) Connect another **Ethernet Cable** into the **LAN Port** of the Managed AP and the other end to the **Ethernet Port** on the Wireless Management Switch. With the Wireless Management Switches, the Managed AP is able to obtain a proper assigned IP address for further configurations.



2 IP Address Configuration

- A) Once your computer is on, ensure that your TCP/IP is set to **On** or **Enabled**. Open Network Connections and then click **Local Area Connection**. Select **Internet Protocol Version 4 (TCP/IPv4)**.

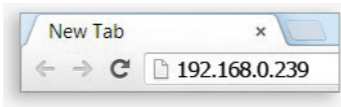


Ceiling Mount Design 11AX Wireless Managed Indoor Access Point

- B) If your computer is already on a network, ensure that you have set it to a Static IP Address on the interface. (Example: 192.168.0.88 and the Subnet Mask address as 255.255.255.0.)

3 Management Switch Setup

- A) Open a web browser on your computer. In the address bar of the web browser, enter **192.168.0.239** and **enter**.

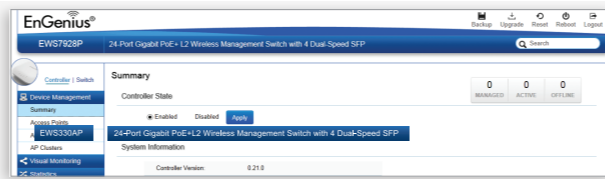


- B) A login screen will appear. By default, username is **admin** and the password is **password**. Enter the current username and password of the Wireless Management Switch and then click **Login**.



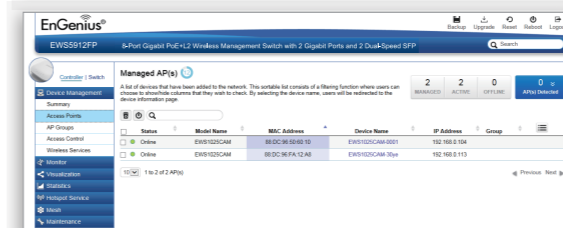
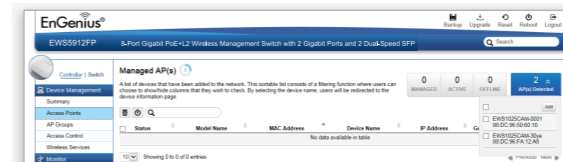
* Your mode number may be different in the web browser interface.

- C) The EnGenius Wireless Management Switch User Interface will appear. Make sure the **Controller State** is set to **Enabled**.



4 Adding Managed AP (Through EnGenius Wireless Management Switch GUI)

- A) All Managed AP(s) connected to the same network as the Wireless Management Switch will appear on the right side of the screen, under **Detected** list. Locate and select the Managed AP by checking the box and click **Add** to manage the device.

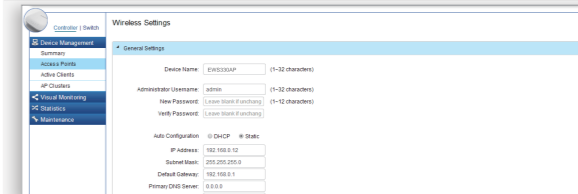


- B) You may configure your Managed AP(s) after you successfully connect to the Wireless Management Switch through its **GUI**.

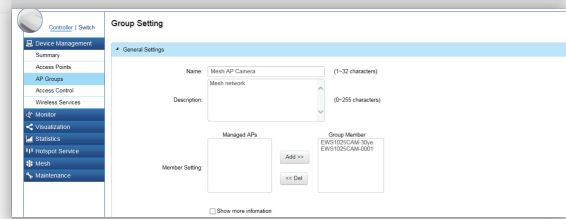
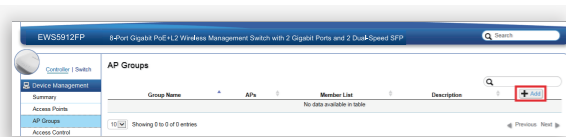
5 Configuring Managed AP (Through EnGenius Wireless Management Switch GUI)

- A) Configure Managed AP(s) through the GUI interface from the switch for WLAN settings under **Device Management**. Click the "Device Name" in order to configure your Managed AP.

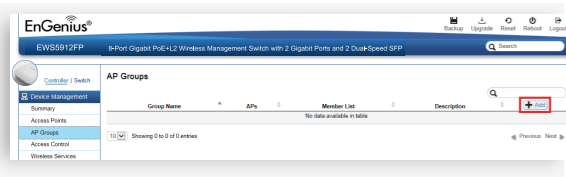
Status	Model Name	MAC Address	Device Name	IP Address	Group
Online	EWS102SCAM	88 DC 96 50 60 10	EWS102SCAM.0001	192.168.0.104	
Online	EWS102SCAM	88 DC 96 FA 12 AB	EWS102SCAM.30ye	192.168.0.113	



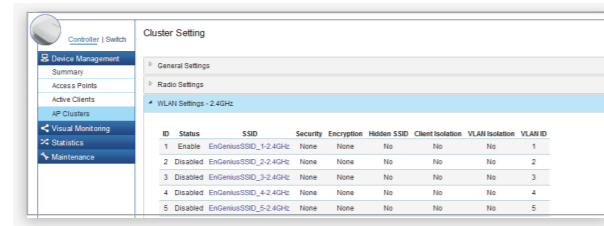
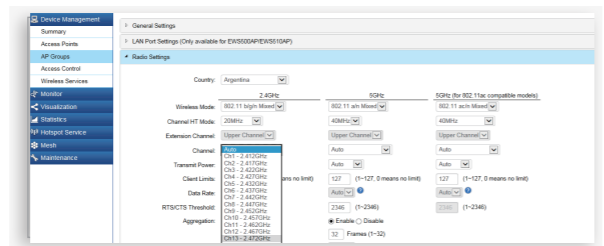
- B) Add Managed AP(s) to a specific **AP Group** to save repetitive configuration tasks.



C) Users may create several groups simultaneously to accommodate their deployments under **AP Groups**.



D) For distinct settings, EnGenius Wireless Management switches still offer individual Managed Access Point customization for cluster members such as different channels that best adapt your local WLAN deployments.



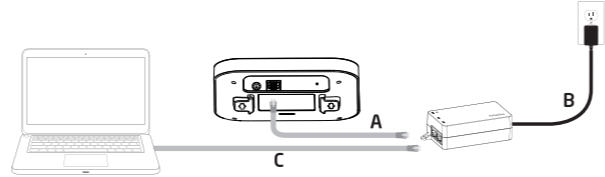
E) Upon successful connection and setup, user can review sections of the web management pages and unleash more features for WLAN deployment and performance monitoring.

Stand-alone Access Point Installation

1 Connecting the Access Point

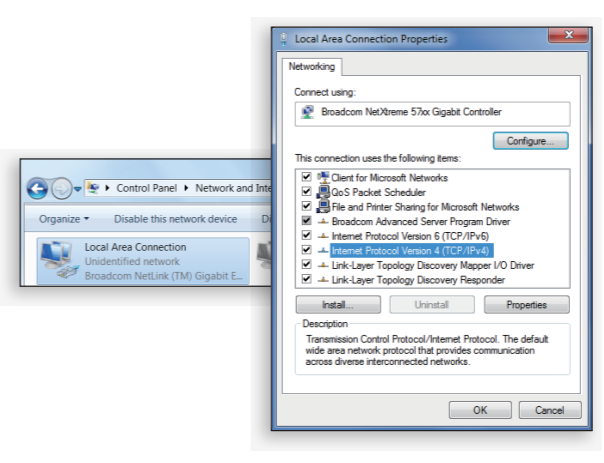
- A) Connect one end of an **Ethernet cable** into the **LAN (PoE)** port of this Access Point and the other end to a **PoE Adapter**.
- B) Connect a **Power cord** with the **PoE Adapter** and plug the other end into an **electrical outlet**.
- C) Connect the second **Ethernet cable** into the **LAN port** of this PoE Adapter and the other end to the **Ethernet port** on the computer.

Note1: The Access Point can be powered by 802.3af/at PoE (Power over Ethernet). You can consider to adopt EnGenius EPA5006GP or EPA5006GAT for powering up your 11AX device.
Note2: EWS357AP can be driven by IEEE 802.3af. EWS377AP and EWS390AP should be driven by IEEE802.3at.

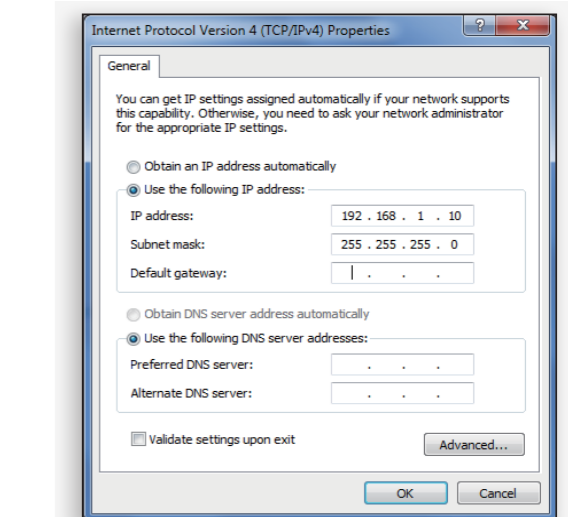


2 IP Address Configuration

A) Once your computer is on, ensure that your TCP/IP is set to **On** or **Enabled**. Open **Network Connectons** and then click **Local Area Connection**. Select **Internet Protocol Version 4 (TCP/IPv4)**.

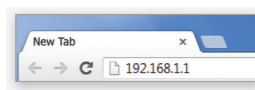


B) If your PC is already on network, ensure that you have set it to a static IP Address on the interface. (Example: 192.168.1.10 and the Subnet Mask address as 255.255.255.0).



3 Access Point Setup

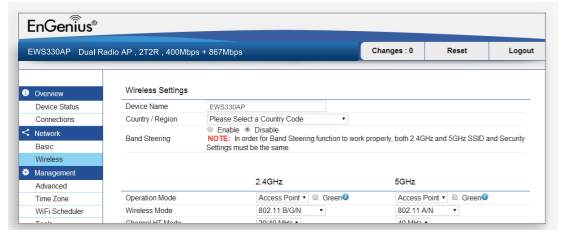
A) Open a web browser on your computer. In the address bar of the web browser, enter **192.168.1.1** and **enter**.



B) A login screen will appear. By default, the username of the Access Point is **admin** and the password is **admin**. Enter the current username and password of the Access Point and then click **Login**.



C) The EnGenius Access Point User Interface will appear. This device can operate in Access Point operating mode.

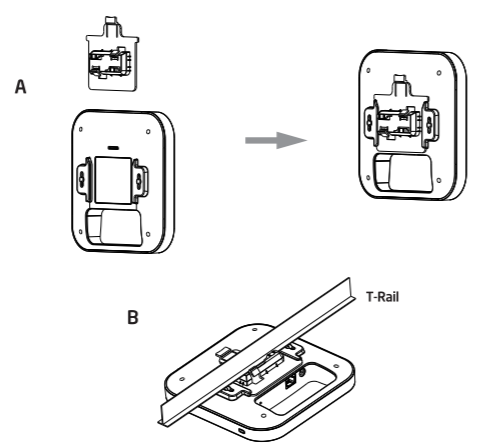


* Your model number may be different in the web browser interface.

4 Mounting the Access Point

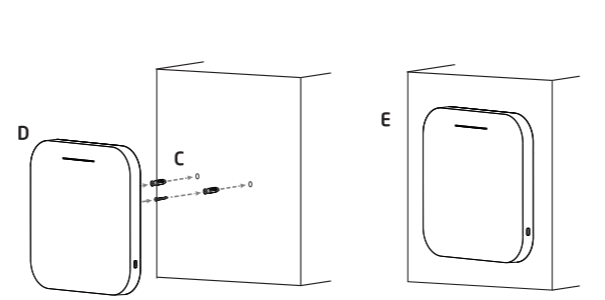
Ceiling Mounting the Access Point:

- A) Slide the ceiling mount base into the slot of the Access Point.
- B) Hold the Access Point with one hand to reach the other hand over the T-Rail sides of the bracket. Then hook the stationary end of the ceiling mount bracket onto the T-Rail.



Wall Mounting the Access Point:

- C) Continued from A, determine where the Access Point to be placed and mark location on the surface for the two mounting holes. Use the appropriate drill bit to drill two 8.1mm diameter and 26mm depth holes in the markings and hammer the bolts into the openings.
- D) Screw the anchors onto the holes until they are flush with the wall; screw the included screws into the anchors.
- E) Place the Access Point against wall with the mounting screw heads.



Technical Support

Country of Purchase	Service Center	Service Information
North America www.engeniustech.com	Canada	rma@engeniustech.com Toll Free: 888-397-2788 Local: (+1) 905-940-8181
	Los Angeles, USA	support@engeniustech.com Toll Free: 885-735-7888 Local: (+1) 714-432-8668
Europe www.engeniusnetworks.eu	Netherlands	support@enginiusnetworks.eu Local: (+31) 40-8200-887
Africa / Middle East www.engenius-me.com	Dubai, UAE	support@enginius-me.com Local: (+971) 4-357-5599
Asia / Oceania www.engeniustech.com.sg	Singapore	techsupport@engeniustech.com.sg Local: (+65) 6227-1088
Taiwan www.engeniustech.com.tw	Taiwan, R.O.C.	twsupport@enginiusnetworks.com Toll Free: 0800 003 885 Local: (+886) 2-2652-1808

Notes

Maximum data rates are based on the IEEE standards. Actual throughput and range may vary depending on many factors including environmental conditions, distance between devices, radio interference in the operating environment, and mix of devices in the network. Features and specifications subject to change without notice. This device complies with Part 15 of the FCC Rules. Operation is subject to the following two conditions: (1) this device may not cause harmful interference, and (2) this device must accept any interference received, including interference that may cause undesired operation. Trademarks and registered trademarks are the property of their respective owners. For United States of America: Copyright ©2019 EnGenius Technologies, Inc. All rights reserved.





請勿列印此頁
Don't print this page.

材質 | 80P 模造紙

印刷 | 單色黑

展開尺寸 | 420*180 mm

成型尺寸 | 84*90 mm

1. 不可有印刷不清、斷字或者滲墨現象
 2. 印刷內容與沒有指示的尺寸以網版data為準
 3. 沒有指示位置的部分公差為 $\pm 0.2\text{mm}$
 4. 沒有指示的部分傾斜公差為 ± 0.2 度
- 公差部分不符合上列標準
 - 印刷如有不清、斷字滲墨現象
 - 印刷位置與圖比例印刷不符合
廠商須無條件重新製作!

部門	外觀設計課			料號	6709A3203420			
日期	2019/03/07	比例	1/1	單位	mm	工業設計工程師	Mandy	
該專案經理人或業務之內容核准		品牌產品規劃PM		檢圖	Rennier			