

# EnGenius Video Management Software

## User Manual

Ver : 1.0.0.0

All features and functions are subject to change without notice. Please visit **[www.engeniusnetworks.com](http://www.engeniusnetworks.com)** for the latest firmware version.

## TABLE OF CONTENTS

1. GETTING STARTED .....	2
1.1 Minimum System Requirements .....	2
1.2 VMS Installation.....	2
2. USING VMS .....	3
2.1 User Interface Overview .....	6
2.1.1 Screen Division.....	7
2.1.2 System Information.....	7
2.1.3 eMAP .....	7
2.1.4 Playback .....	7
2.1.5 Configuration .....	7
2.1.6 Multi-Screen .....	8
2.1.7 Exit.....	8
2.1.8 Camera List .....	8
2.2 Configuration .....	8
2.2.1 System.....	8
2.2.4 Account.....	11
2.2.5 Recording .....	12
2.2.6 Log View .....	13
2.3 eMAP .....	14
2.4 Playback .....	16

# 1. Getting Started

## 1.1 Minimum System Requirements

Before installing the EnGenius Video Management Software, please make sure your system meets the following recommended minimum system requirements.

Server Hardware Minimum Requirements (recommended)			
Operating System	Windows Server 2000, 2003, 2008/Windows XP (32/64 bit), Windows 7 (32/64 bit), Windows 8 (32/64 bit)		
Recording Channels	16 CH	16~32 CH*	64CH*
CPU	2nd Generation Intel® Core™ i3 Processors	2nd Generation Intel® Core™ i5 Processors	2nd Generation Intel® Core™ i5 Processors
RAM	2 GB or above	4GB or above	8GB or above
Network Interface Card	Ethernet, 1000 BASE-T recommended		
Graphics Adapter	DirectX 9 compatible 1 GB graphics card		
Hard Disk Type	SATA, SCSI, SAS (7200 rpm or faster) in NTFS format		
Hard Disk Space	1 TB**		

\*EnGenius 32 CH & 64 CH VMS will be available later and can be updated easily from the current 16-channel version. Please visit [engeniustech.com](http://engeniustech.com) for the latest available version.

\*\*The VMS video raw data will overwrite when Hard Disk Free Space less than 20%, default path is Disk C, recommend to change to another Disk path to keep HDD usage.

**Note:** Only users with Administrator privileges can install or use VMS on a Windows Vista system. It is assumed that all the cameras have already been installed and operational as this manual is specifically for monitoring software installation instruction only.

## 1.2 VMS Installation

The Installation CD contains the software needed to run the program:

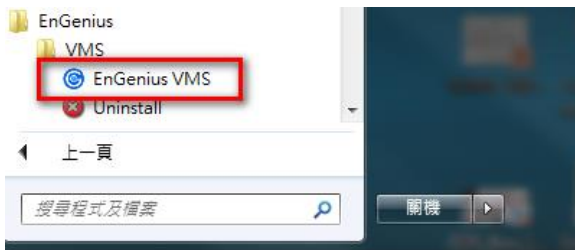
- **Video Management Software:** Includes Live View monitoring, eMAP, Configuration, Recording mode and Playback features.
- **IP Utility:** This utility allows a user to easily discover the IP cameras, basic configurations and perform multiple firmware upgrades for connected IP cameras.

Please select your CD-ROM drive manually and open the VMS folder. Click **EnGenius\_VMS\_Install.exe** to initiate the installation. Click **Finish** to complete process.

## 2. Quick Start

Step 1: Go to Start > All Programs > EnGenius > VMS > “EnGenius VMS” to execute Live Monitor

Step 2: Enter default username/password both **admin** , then click on Login.



### 2.1 Install IP Camera(s)

Step 1: Setup the IP camera(s) by referring to the user manual

Step 2: Make sure you can access this camera through IE browser.

Step 3: Add the IP camera(s) to the system by following the steps below.

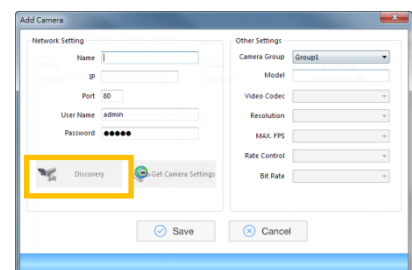
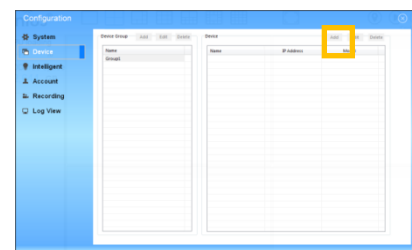
### 2.2 Add IP camera(s)

Step 1: Execute EnGenius VMS .

Step 2: Type in user name and password and log in to the system.

Step 3: In Live Monitor , go to Configuration and select Device to obtain the Camera setting panel.

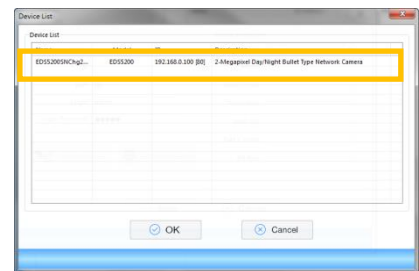
Step 4: Go to Camera tab, click Add to open Add Camera page



Step 5: Click on Camera Discovery to detect IP cameras under this local area network (LAN).

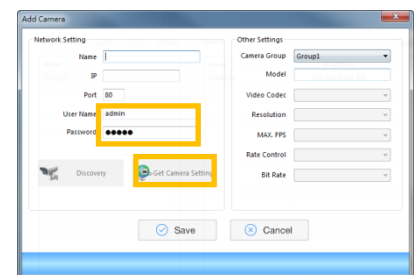
Note: The Discovery function is available only when the IP cameras support UPnP.

Step 6: Select one of the IP cameras that are available and click OK.



Step 7: Enter the Camera username & password and Click “Get Camera Settings” to verify camera link .

Step 8: check the Camera settings ok, than Click “Save” to add the camera and exit.



### 2.3 Set Recording

Step 1: Execute EnGenius VMS .

Step 2: Type in user name and password and log in to the system.

Step 3: In Live Monitor , go to Configuration and select Recording for detail setting

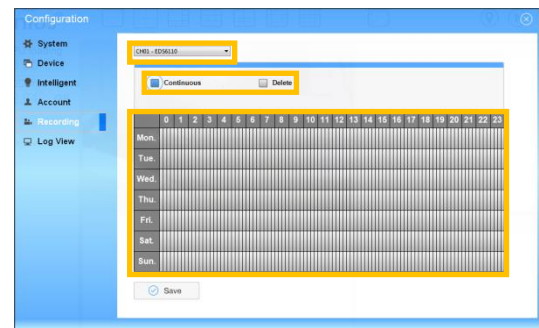
Step 4: Choose a camera and then select recording mode

Note: The Camera list had been save on this VMS first.

Step 5: left-click on the schedule bar for selection area.

Step 6: Select Save to update the recording schedule.

Step 7: exit the Configuration to go back to Live Monitor.



## 2.4 Playback

Step 1: Execute EnGenius VMS .

Step 2: Type in user name and password and log in to the system.

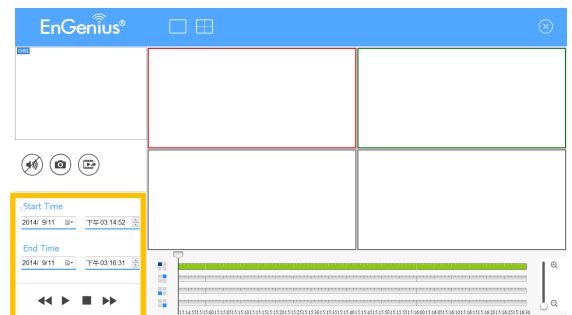


Step 3: In Live Monitor , Click on Playback.

Step 4: In Playback, Select on Start Time & End Time range than click Play

Step 5: click on Show Records to make sure the video is available, left click on mouse and drag to select a video clip to replay; user can also select multiple channels to replay at the same time.

Note: The Playback function up to 4 channel IP Camera.



## 2.5 eMAP

Step 1: Execute EnGenius VMS .

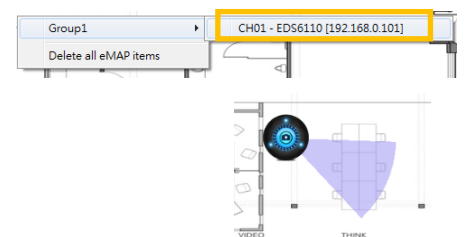
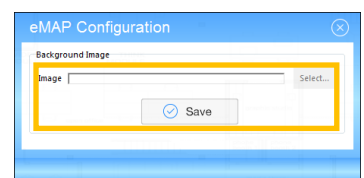
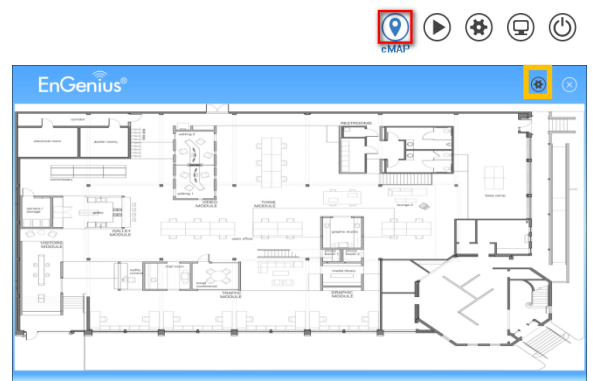
Step 2: Type in user name and password and log in to the system.

Step 3: In Live Monitor , Click on eMAP

Step 4: In eMAP, click on Configuration to upload Background Image, select the image file and click Save to change Background Image

Step 5: right click on mouse, show the camera and move the camera to current location and adjust the view angle

Noticed: the camera view angle just for reference, it will not control the real camera view angle.



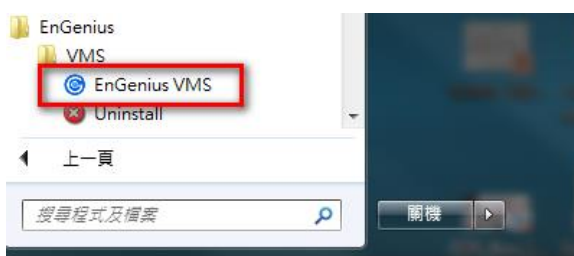
## 3. Using VMS

Step 1: Go to **Start > All Programs > EnGenius > VMS > EnGenius VMS** to execute Live Monitor.

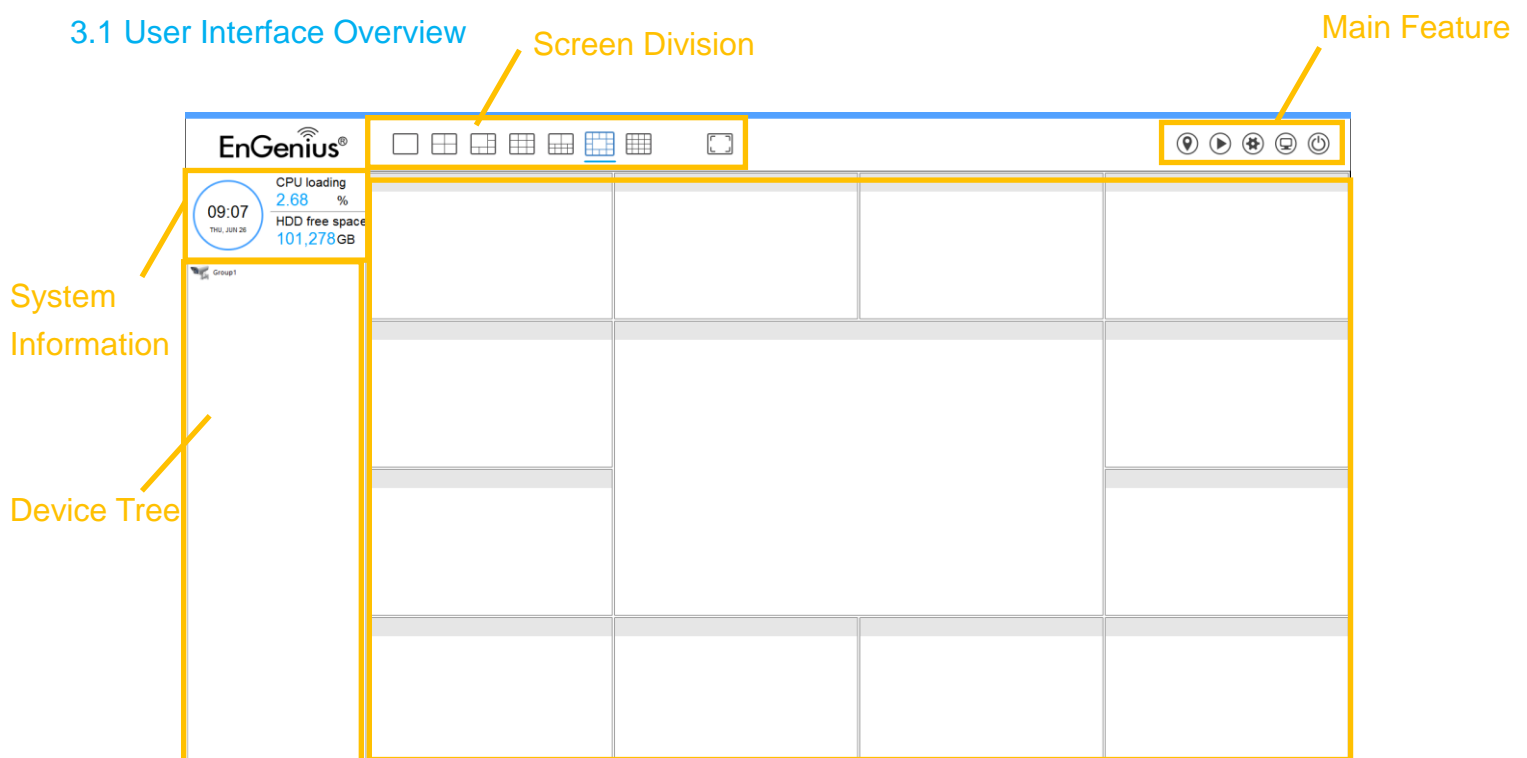
Step 2: Enter the default username/password: **admin**, then click on **Login**.

Username: **admin**

Password: **admin**



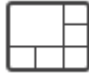
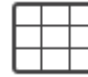






### 3.1 User Interface Overview



### 3.1.1 Screen Division

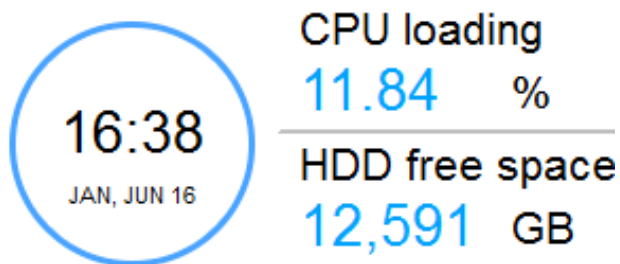
You can allocate the sub-screen display by clicking on the desired layout icon. To switch to single camera display, double click on a particular sub-screen. Double click on the screen again to regain the previous screen division layout.

	Switches to 1 screen		Divides into 4 screens		Divides into 6 screens		Divides into 9 screens
	Divides into 10 screens		Divides into 13 screens		Divides into 16 screens		Switches to Full screen

### 3.1.2 System Information

Displays the current date, time, free disk space, and CPU loading information.

**Note:** It is recommended that the computer running VMS should have the CPU loading control under 90%, if it is higher than 90% it may affect VMS recording performance.



### 3.1.3 eMAP

Select the **eMap** icon to view the E-Map page. The eMAP feature helps to locate devices easily while the information window helps to show the status and orientation of each device.



### 3.1.4 Playback

Select the **Playback** icon to watch recorded video, search recorded video, adjust images within stored data, save video/pictures, print images, check log information and event records, and configure the recording settings.



### 3.1.5 Configuration

Select the **Configuration** icon to modify the general system settings, camera settings, user account settings, recording settings, system logs and so on.





### 3.1.6 Multi-Screen

Select the **Multi-Screen** icon to view Live Monitor and/or eMAP features on multiple monitors.



### 3.1.7 Exit

Select the **Exit** icon to exit the surveillance system.



### 3.1.8 Camera List

Displays a list of currently connected cameras by group. The camera can be defined within different groups for application notices. You can modify groups under the **Configuration** section.



## 3.2 Configuration

### 3.2.1 System

**Configuration**

- System** (selected)
- Camera
- Account
- Recording
- Log View

**VMS Information**

VMS Name : Engenius VMS

Time Zone : GMT 08:00 (Pacific Standard Time)

System Version : 1.0.0.0

Language : English

**Video Record** — [ [ The system need to be restarted after you changed this path ] ]

Folder : C:\EnGeniusVMS\Record Select...

**Video Export**

Folder : C:\EnGeniusVMS\Export Select...

**Snapshot**

**Playback**

☒ Always ask me where to save the snapshot image

Folder : C:\EnGeniusVMS\Snapshot\_Playack Select...

Save

**VMS Information:** Displays information about the VMS program:

- VMS Name:** Displays the VMS name. The VMS name can be modified.
- Time Zone:** Displays the Time Zone. The Time Zone is automatically synchronized with your client computer.

- c. **System Version:** Displays the current version of VMS you are using.
- d. **Language:** Select the GUI language you wish to use. More languages will be supported in subsequent versions. (coming soon)

**Video Record:** Assign the default folder for the system where you wish to store all recorded video files.

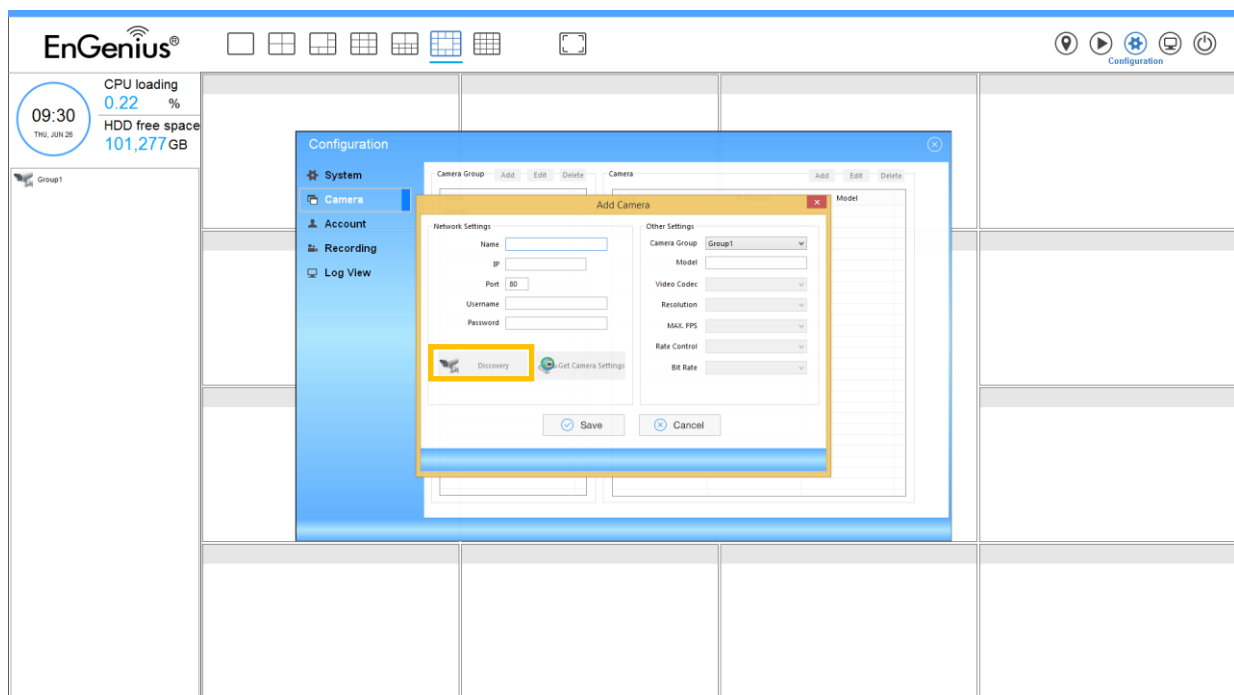
**Note:** It is highly recommended that you do **not** save in system Hard Disk (C :) to avoid computer efficiency dropping when free storage is low.

**Video Export:** Assign the default folder for the system where you wish to do video export files.

**Snapshot:** Shows configuration settings for the Snapshot feature.

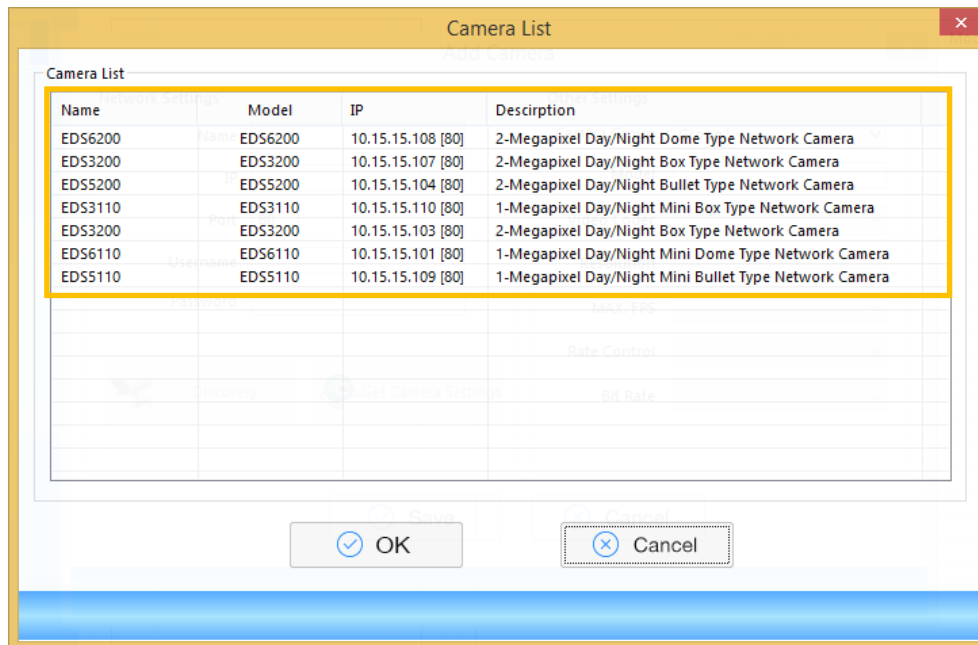
**Snapshot Playback:** Check the box to enable the ability to save and playback snapshot images from recorded video clips. Assign the default folder for the system where you wish to store all recorded snapshot files.

### 3.2.2 Adding Cameras



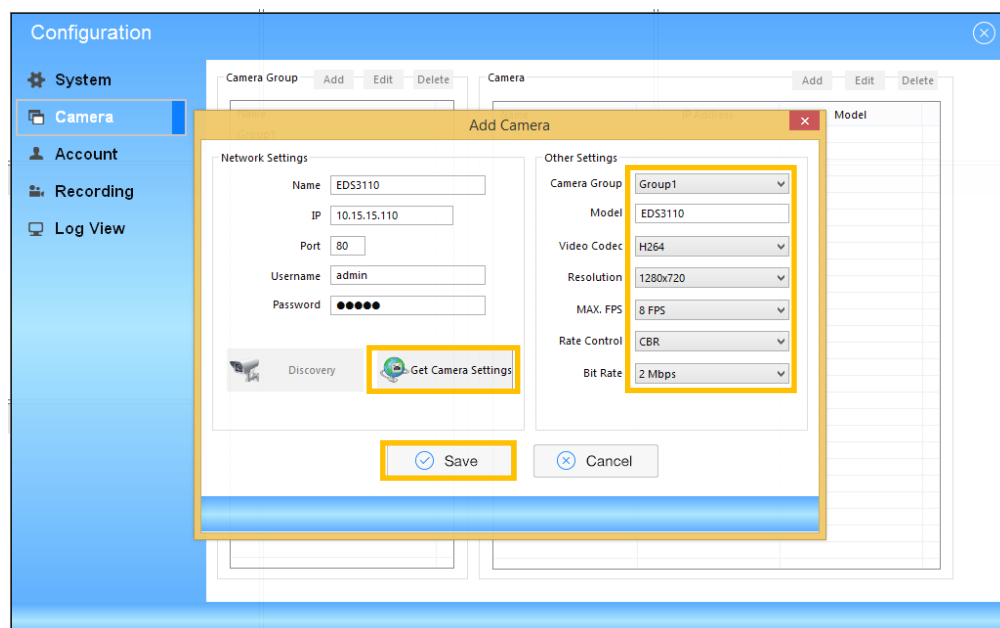
To add a Camera to the VMS, click **Configuration > Camera > Add** to add Cameras to the VMS. Click on **Discovery** to detect and automatically add cameras to the VMS using the Discovery Tool.

**Discovery:** Click **Discovery** to open a window that displays all the cameras that are connected to the local network. Select one and click **OK** to add it. Repeat the process for any other cameras you would like to add.



### To Manually Add Cameras Without Using the Discovery Tool

In the event that you are unable to automatically detect a camera, you can manually enter in camera information to connect it to the VMS.



**Name:** Enter the camera name you would like to use for the camera.

**IP:** Enter the camera's IP address in the IP field.

**Port:** Enter the HTTP port in use for the camera.

**Username:** Enter the camera username (**admin** by default).

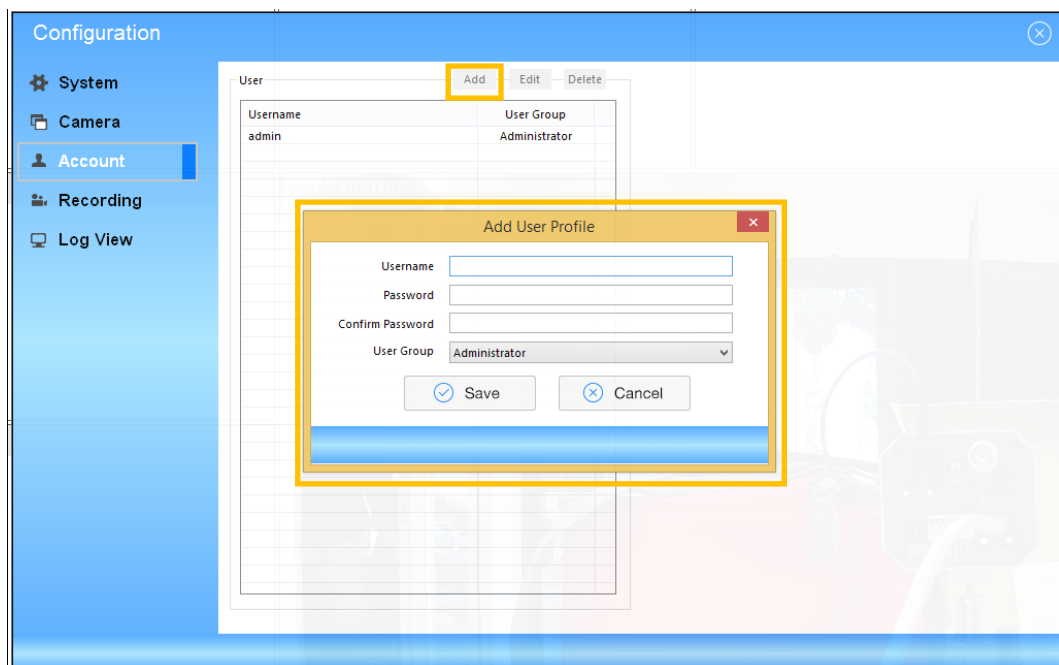
**Password:** Enter the camera password (**admin** by default).

### Other Settings

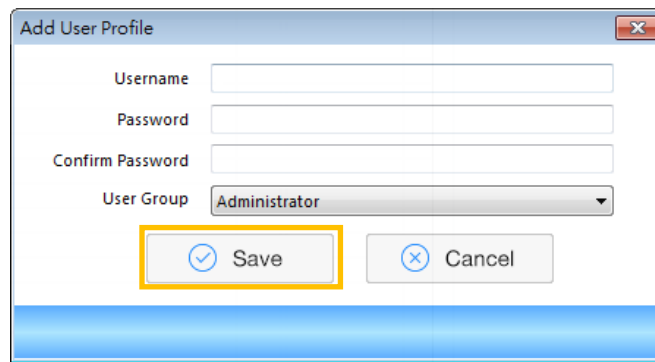
- Camera Group:** Select a camera group from the group list.
- Model:** The VMS will detect the camera model name.
- Video Codec:** Select the camera's desired codec (eg. H.264, MPEG-4 or MJPEG).
- Resolution:** Choose the camera's Video stream resolution. Your options are: 1280x720, 720x480, 640x352 or 448x256.
- MAX. FPS:** Select the camera's max FPS rate. Your options are: 8, 15, 24 or 30FPS.
- Rate Control:** Select the camera's rate control. Your options are: CBR or VBR.
- Bit Rate:** Select the camera's bit rate. The range is from 128 Kbps~4 Mbps.

When you have finished reviewing the Other Settings section, click **Save** to manually add the camera to the list.

### 3.2.3 Account



**User:** You can manage user accounts for the VMS here. Click **Add**, **Edit**, or **Delete** to add a new user, modify an existing user account, or delete an existing account.



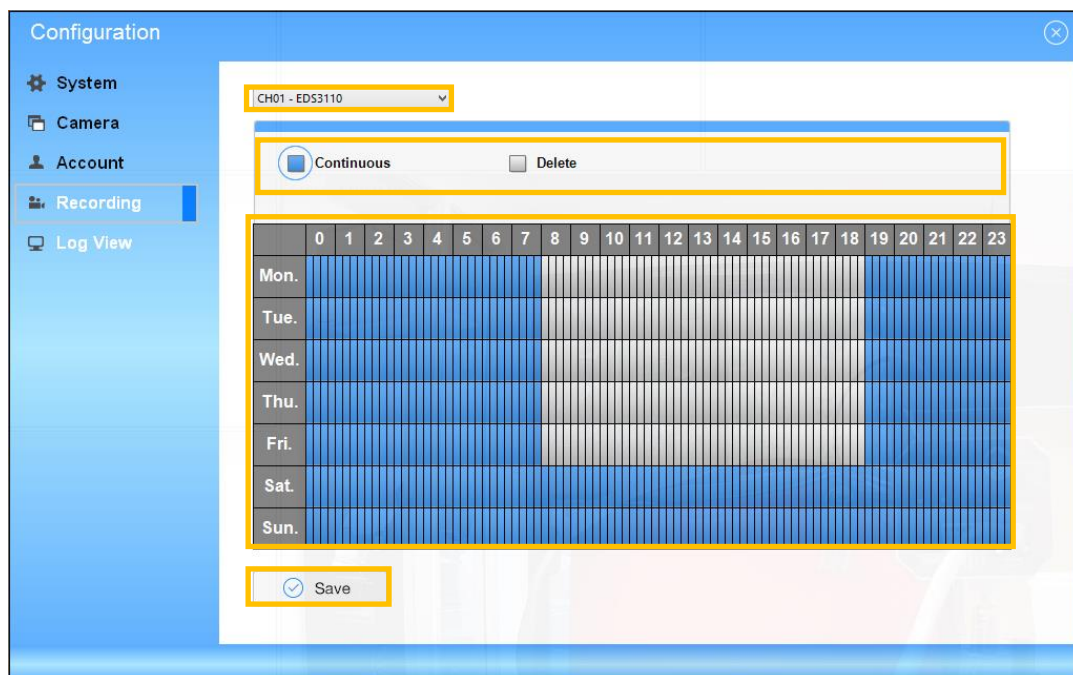
The 'Add User Profile' dialog box contains the following fields and controls:

- Username:** A text input field.
- Password:** A text input field.
- Confirm Password:** A text input field.
- User Group:** A dropdown menu currently set to 'Administrator'.
- Buttons:** 'Save' (with a checkmark icon) and 'Cancel' (with an 'X' icon). The 'Save' button is highlighted with a yellow border.

### Adding/Editing A User Profile

- a. **Username:** Enter to create/modify the username for the VMS user account.
- b. **Password:** Enter to create/modify the password for the VMS user account.
- c. **Confirm Password:** Confirm the password for the VMS user account.
- d. **User Group:** There are two (2) levels of VMS's users. Please select the level based on the user's access needs.
  - i. **Administrator:** Has full control of all functions and features of the VMS.
  - ii. **Operator:** Has limited control of the VMS's functions and features.

### 2.2.4 Recording



The 'Recording Schedule' configuration window shows the following elements:

- Left Sidebar:** Navigation menu with 'System', 'Camera', 'Account', 'Recording' (selected), and 'Log View'.
- Channel Selection:** A dropdown menu showing 'CH01 - ED53110'.
- Recording Mode:** Two radio buttons: 'Continuous' (selected) and 'Delete'.
- Schedule Grid:** A table with 24 columns (0-23) and 7 rows (Mon.-Sun.). The grid is divided into two sections: columns 0-7 are blue, and columns 8-23 are grey.
- Buttons:** A 'Save' button with a checkmark icon at the bottom left.

**Recording Schedule:** You can manually change the settings at any time after you insert or load a schedule template to the system.

**Camera:** Choose from the drop-down list to select a camera.

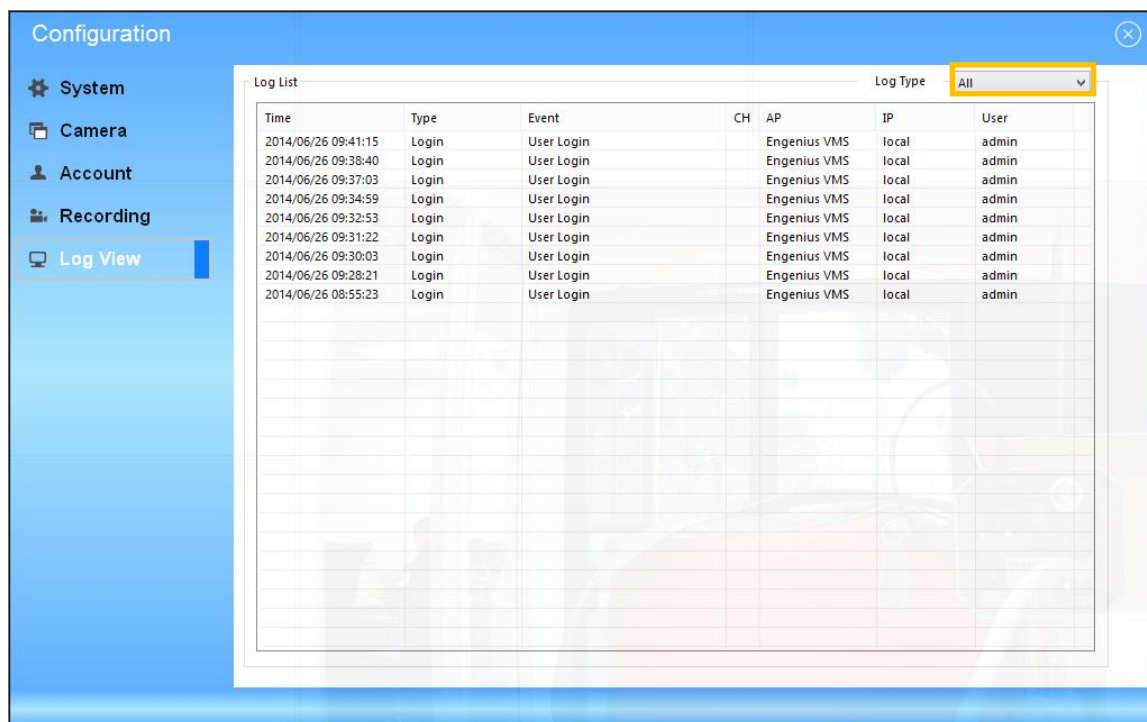
**Recording Mode:** There are two (2) different recording modes that can be selected:

- a. **Continuous:** Select this option to record video continuously.
- b. **Delete:** Does not record within this time slot.

**Schedule Settings:** You can manually change the settings at any time after you insert or load a schedule.

- a. Click to draw a rectangle over the time slots you wish to include in the schedule. They will be highlighted. You can draw multiple rectangles to cover multiple time slots.
- b. Click **Save** to save this recording rule.

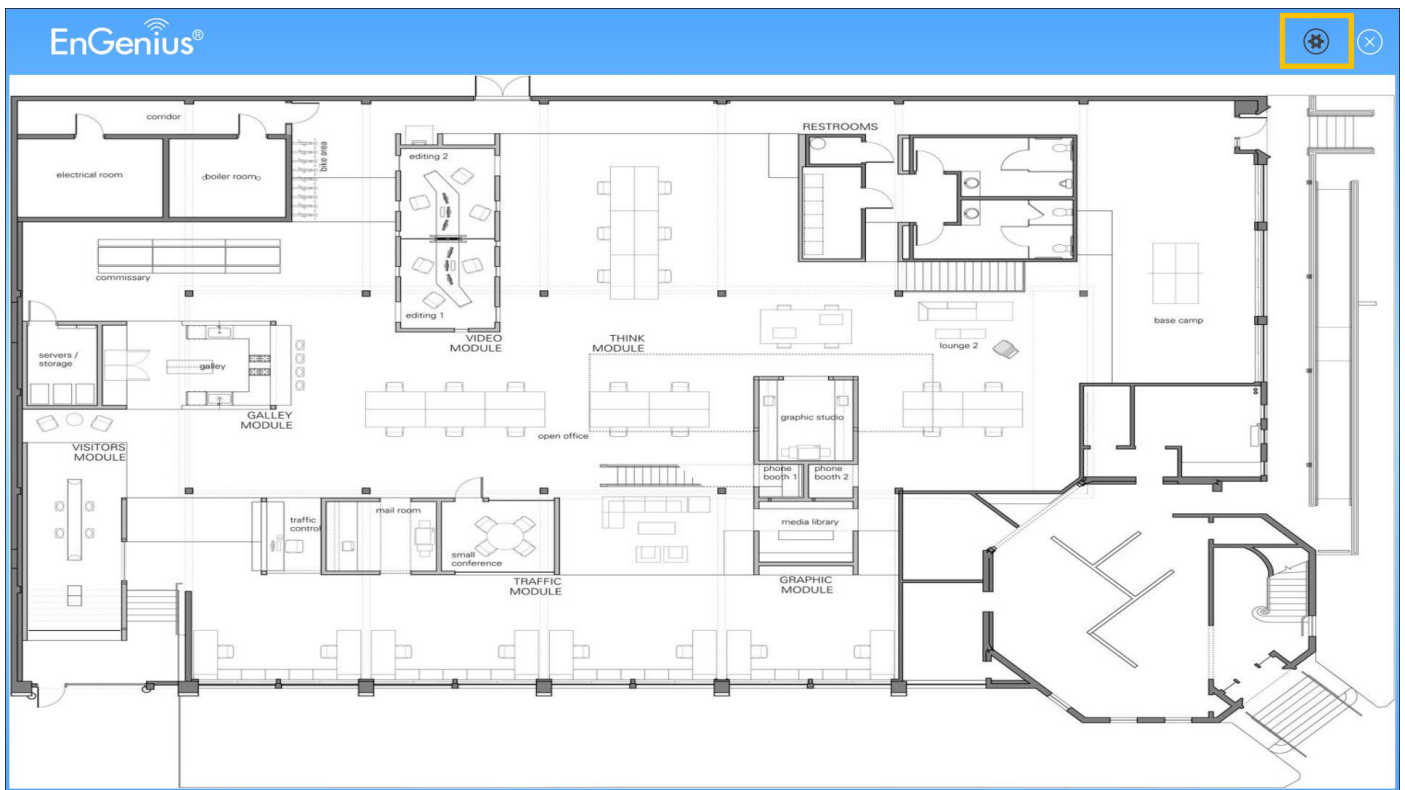
### 3.2.5 Log View



**Log View:** Click **Log View** to view the current log history on the VMS.

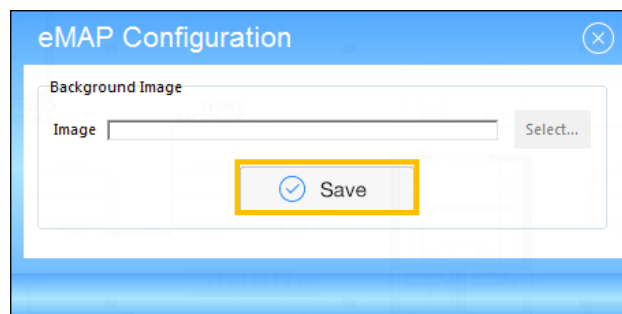
**Log Type:** Select a **Log Type** from the drop-down list. Choose the type of event you wish to view or select **All** from the drop-down list to view all event types. Your options are: All, Login, Recording, Service, and Motion Detection.

### 3.3 eMAP



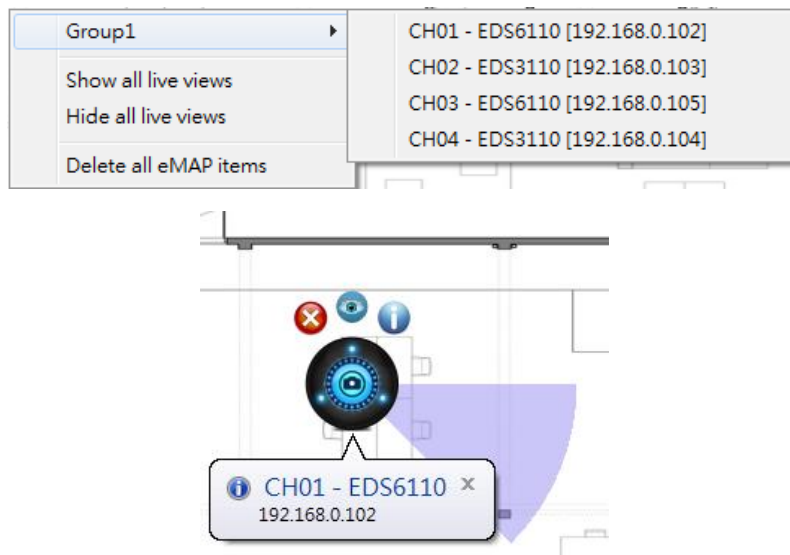
**eMAP:** The VMS supports an intuitive eMAP feature which allows users to upload eMAPs for planning out initial network device deployments, adding or repositioning devices within an existing network, and better overall device management.

**Configuration Icon:** Click **Configuration** to upload a background image in a **.jpeg** format. Click **Save** to save the image to the system.






To add icons to the eMap, right-click on the eMAP icon to show a dialog box:

- You can select a camera from the group list. The camera icon will show on the eMAP.
- You can show all live views when the camera icon is shown on the eMAP.
- You can hide all live views when the camera icon is shown on the eMAP.
- You can remove all cameras on the eMAP.



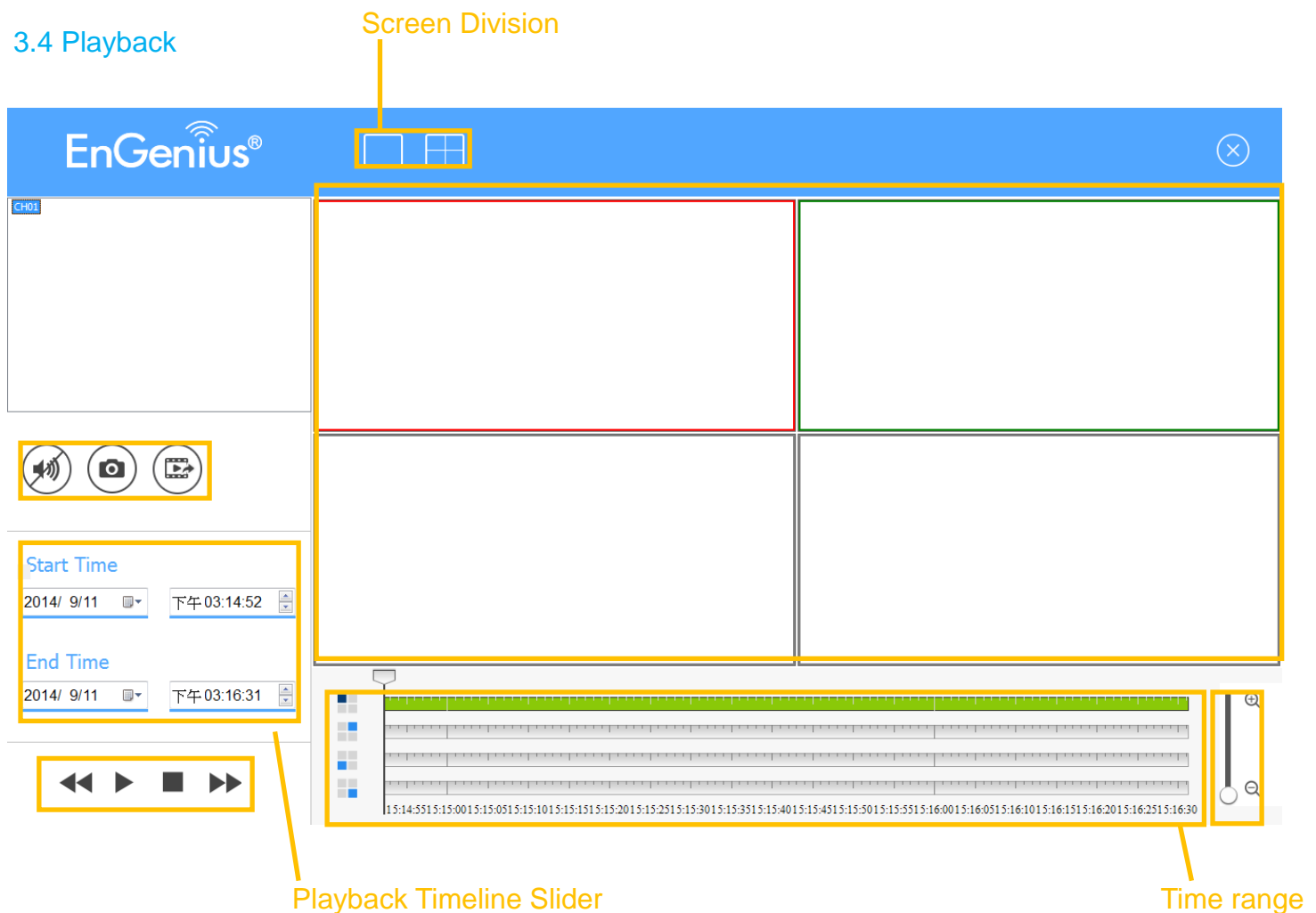
### Camera Icon

- When you mouse over the camera icon, it will show detailed camera information.
- By clicking , you can open this camera's web browser to view detailed configuration information.
- By clicking , you can view the camera's live stream page.
- By clicking , you will remove this camera icon from the eMAP

Select **Open E-Map** to view the E-Map page. The GUI map helps to locate devices easily and the information window helps to show the status of each device.



## 3.4 Playback



**Playback:** the Playback feature allows you to search and playback recorded and saved video.

**Recorded Channel list:** Displays the recorded channel list.

**Recorded video playback window:** Click **Play** will display the recorded video.

#### Playback control panel

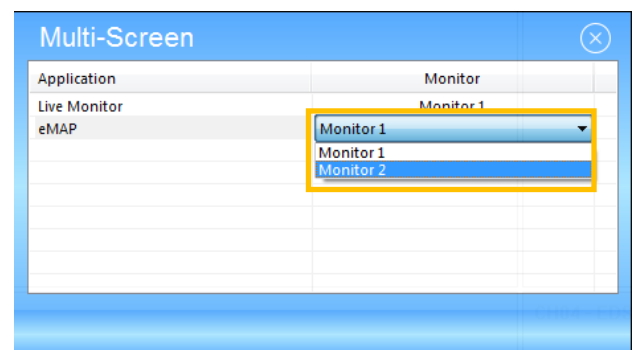
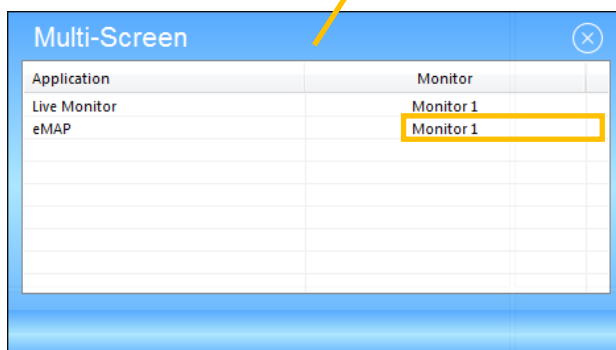
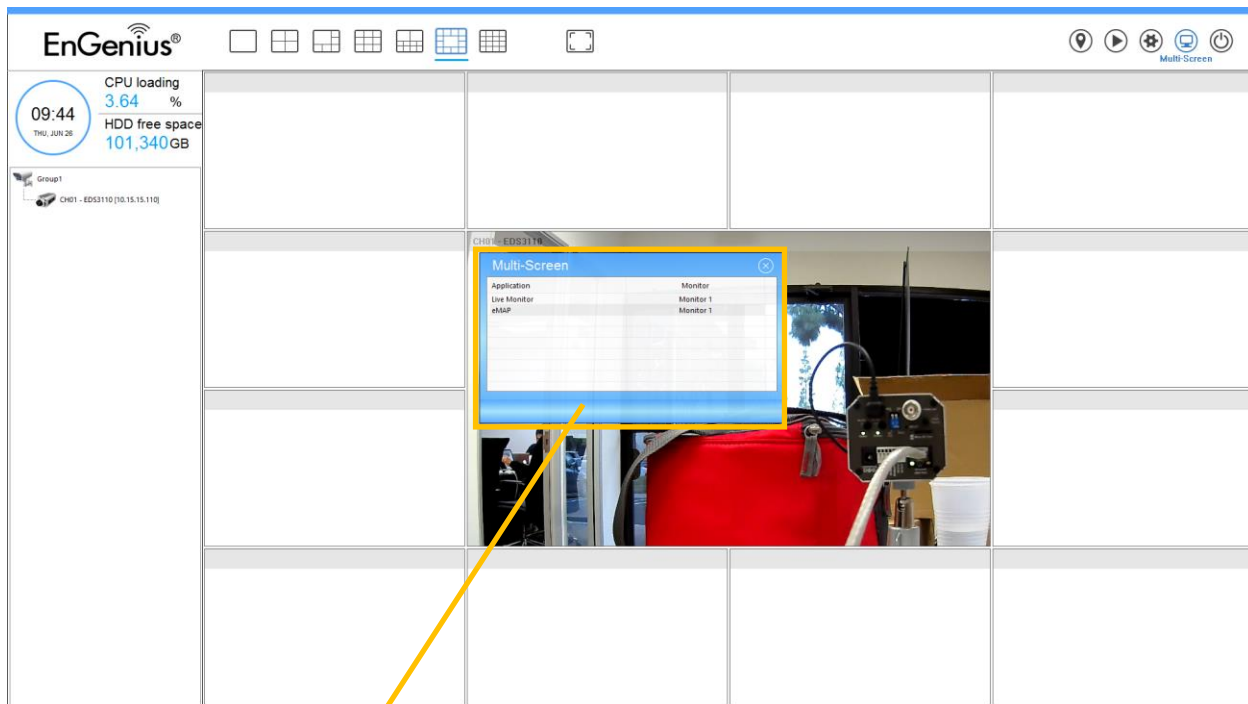
- ◀◀ Click to slow motion control.
- ▶ Click to Start/Pause control
- Click to stop control
- ▶▶ Click to speed up control

📷 **Snapshot Button:** To take a snapshot of the recorded video clip you are playing.

🔊 **Audio Button:** Click to turn the channel's audio **on/off**.

**Time Range:** Click on the + and – signs to zoom-in/out the timeline.

### 3.5 Multi-Screen



**Multi-Screen:** if you have a multi display available for the VMS, you can select different applications to be viewed on multiple monitors.

**Note:** the Live Monitor feature on the initial computer cannot change to a different monitor.