



EnGenius Cloud-enabled Switch Series

Optimal Performance, Enterprise Features & Cloud Management

ECS series switches can be managed by EnGenius Cloud and on-premises ezMaster or can be worked as standalone switches, providing enterprise-class features for simplifying network configuration and monitoring at prices affordable to small and mid-sized businesses. With advanced management, EnGenius Switches enhance network performance to allow companies to focus on growing their business.

Simple – With easy-to-deploy design, EnGenius Managed Gigabit PoE Switches are operational within minutes. Organizations with limited IT support and budgets can create a reliable, efficiently managed network in no time.

Flexible – Choose the port and physical configuration that meets your network and space requirements for optimal performance. Select the management method most effective for the network – locally manage, remotely and locally manage or Cloud manage.

Reliable – EnGenius Cloud’s reliable Gigabit access for networked devices reduces delays that interrupt communications

Secure – Keep your network safe with port and server-based security in addition to two factor authentication and encryption. By setting up event-based alerts, receive push notifications through the EnGenius Cloud app when potential issues arise.

Features & Benefits

- Real-Time System Metrics, Deep-Dive Analytics, and Remote Configurations
- Full-Featured Layer 2+ Switching
- 802.3at/af PoE+ Ready on All Ports with 55 - 740W PoE budgets
- 1-10 Gbps SFP+ Slots Extend Connectivity via Fiber Up links, Redundancy, and Failover
- Network Troubleshooting, Monitoring, and Email Alerts
- Advanced View Displays Network Topology with Devices and Relationships
- Hybrid Switch Mode Supports Multiple Management Options



Benefits to Help Grow Your Business

Increased Flexibility for Network Design

Select either 8-, 24-, or 48-Gigabit ports and Power-over-Ethernet (PoE+)-ready Layer 2 switches with 1-10 Gbps SFP+ ports. Cloud Managed Switch model options also include desktop and rack mountable, fanless, and SmartFan designs.

Enhanced Network Performance

EnGenius' full-featured Layer 2 switches improve network speed and performance by controlling the available bandwidth speed for devices, such as access points, at the port level. By providing the available speed needed in areas where bandwidth needs vary, such as conference rooms and lobbies, EnGenius switches provides faster overall network performance.

Optimized Network Devices

EnGenius switches allow businesses to optimize the installation and power management of network devices, such as access points, IP cameras, and VoIP phones. By providing 802.3at/af PoE+ power and data on all ports, companies can regulate power budgets according to device requirements and remotely power cycle individual ports.

High-Speed Gigabit with Fiber

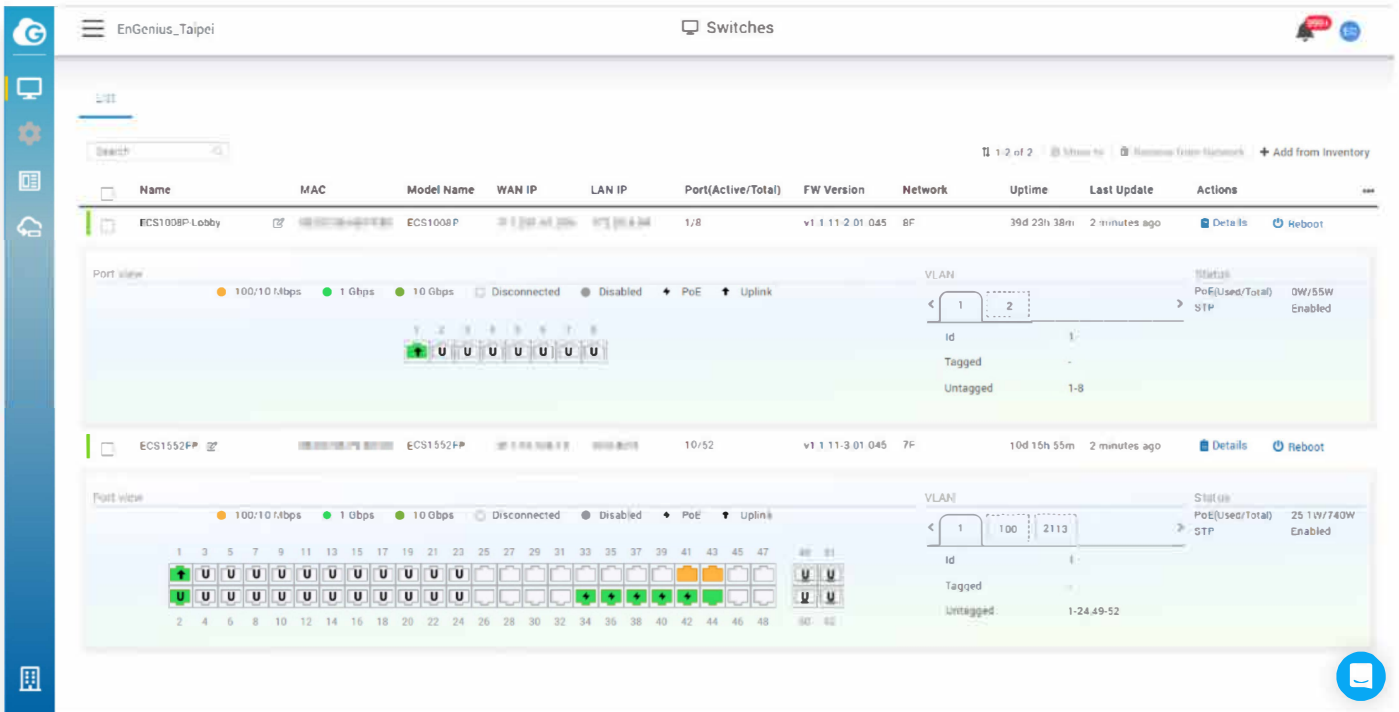
The switch's 1 or 10 Gbps SFP+ slot options connect wired network segments throughout buildings extending beyond the limitations of Ethernet cabling. By reducing delays, businesses experience more consistent and uninterrupted communications.

Increased Access Control and Security

Protect the network with 802.1X port-based client authentication with dynamic VLAN and security through a RADIUS server. Utilizing administrators can use Access Control Lists (ACLs) to see who has access to network segments while screening traffic from unauthorized MAC or IP addresses. By establishing a guest VLAN to grant and limit Internet resources for visitors, guests can use the network while also keeping the network secure.

Improved VLAN/Voice and Quality of Service

Segment the network by departments or traffic types for increased performance and security with 802.1Q VLAN statically or dynamically. While 802.1p Class of Service prioritizes compliant VoIP and video traffic ensuring bandwidth intensive, time-sensitive data is forwarded immediately for clear, smooth voice and video delivery.



Provides In-Depth Network Visibility

The Network Topology View automatically maps the network deployment and displays device relationships across the infrastructure. No more manual tracking required – simply use Network Topology view to troubleshoot switches or access points directly from the cloud management interface. Grab high-level information by hovering over the device icon or click on details to take you right to the cloud device page.

Every Cloud Device is Secure and Protected by Advanced Authentication

With EnGenius Cloud, your network devices are protected with two-factor authentication and non-sequential serial numbers and MAC address verification to ensure only authorized cloud devices are on the network. Once devices are authenticated, a secure tunnel is established between the device and the cloud management system with a unique certificate to encrypt transmissions.

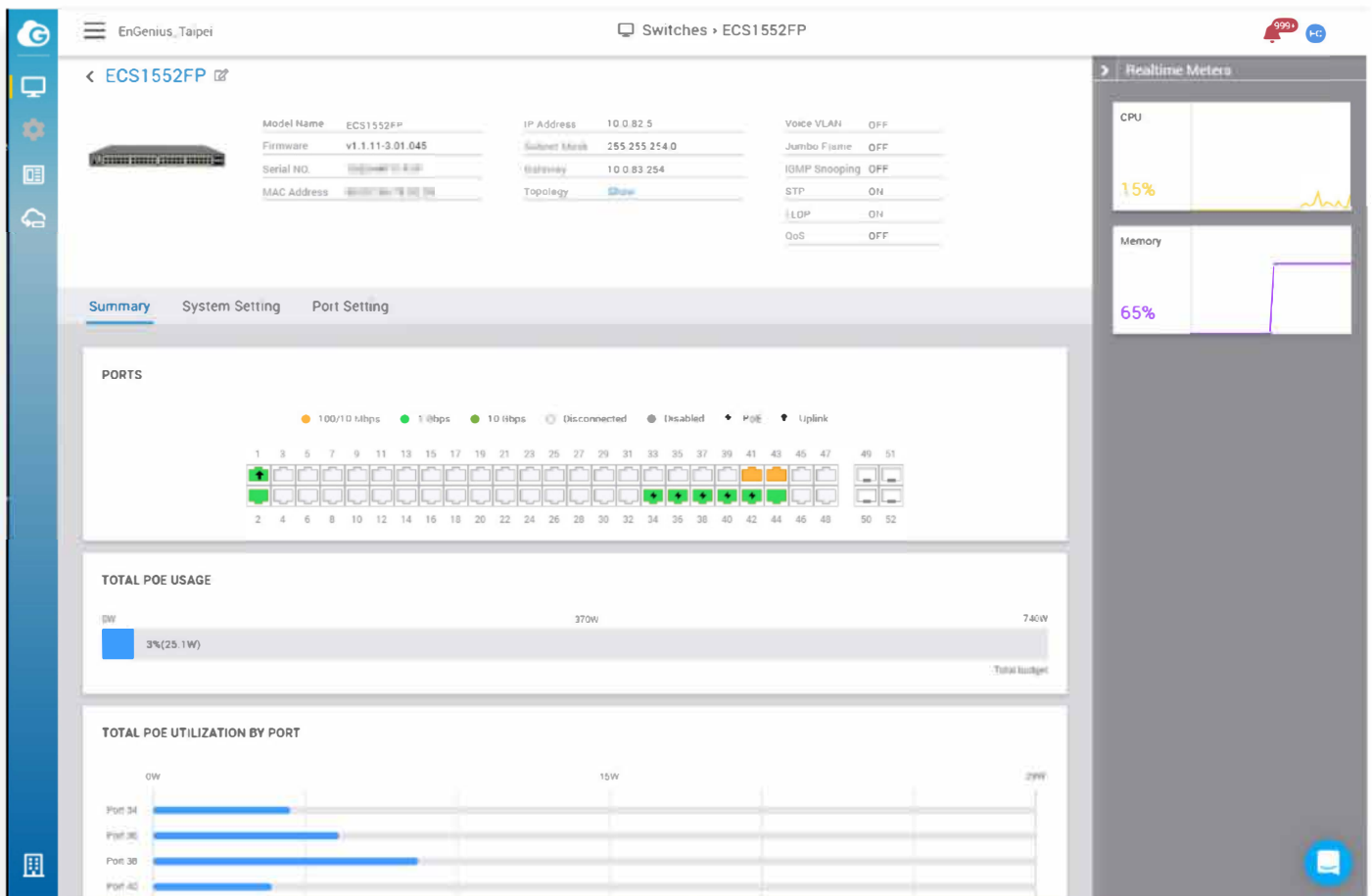
Cloud Improves Setup, Registry and Device Management of Gigabit Switches

For quick and simple setup manage your switches using EnGenius Cloud. Scan and assign switches into an organization and network for device registration and configuration using the EnGenius Cloud app. Simply refine configurations under the list view for switches in the switch's detail page after initial setup and registration.

EnGenius Cloud's dashboard provides a quick health check status of all your switches in an organization and network and quick access into detailed switch configurations and system information.

Conveniently & easily monitor and troubleshoot all of your network switches in one location using switch list and detail view to compare resources, check overall configurations and real-time meters, and configure detailed system and port settings.

Set maintenance schedules across times zones to improve up-time, enable remote system log to track system modifications or configuration changes, establish event-based email alerts and receive push notifications via the EnGenius Cloud app.



Simplified Switch Management, Visibility, and Troubleshooting

By using multiple methods to manage switches, EnGenius decreases administration time through remote management, visibility, and troubleshooting. Select the most effective management approach based on network architecture, administrative permissions, technical aptitude, or even budget.

Locally Manage – manage each EnGenius switch in a standalone setup from its intuitive user interface that provides full access into all the Layer 2 switching features.

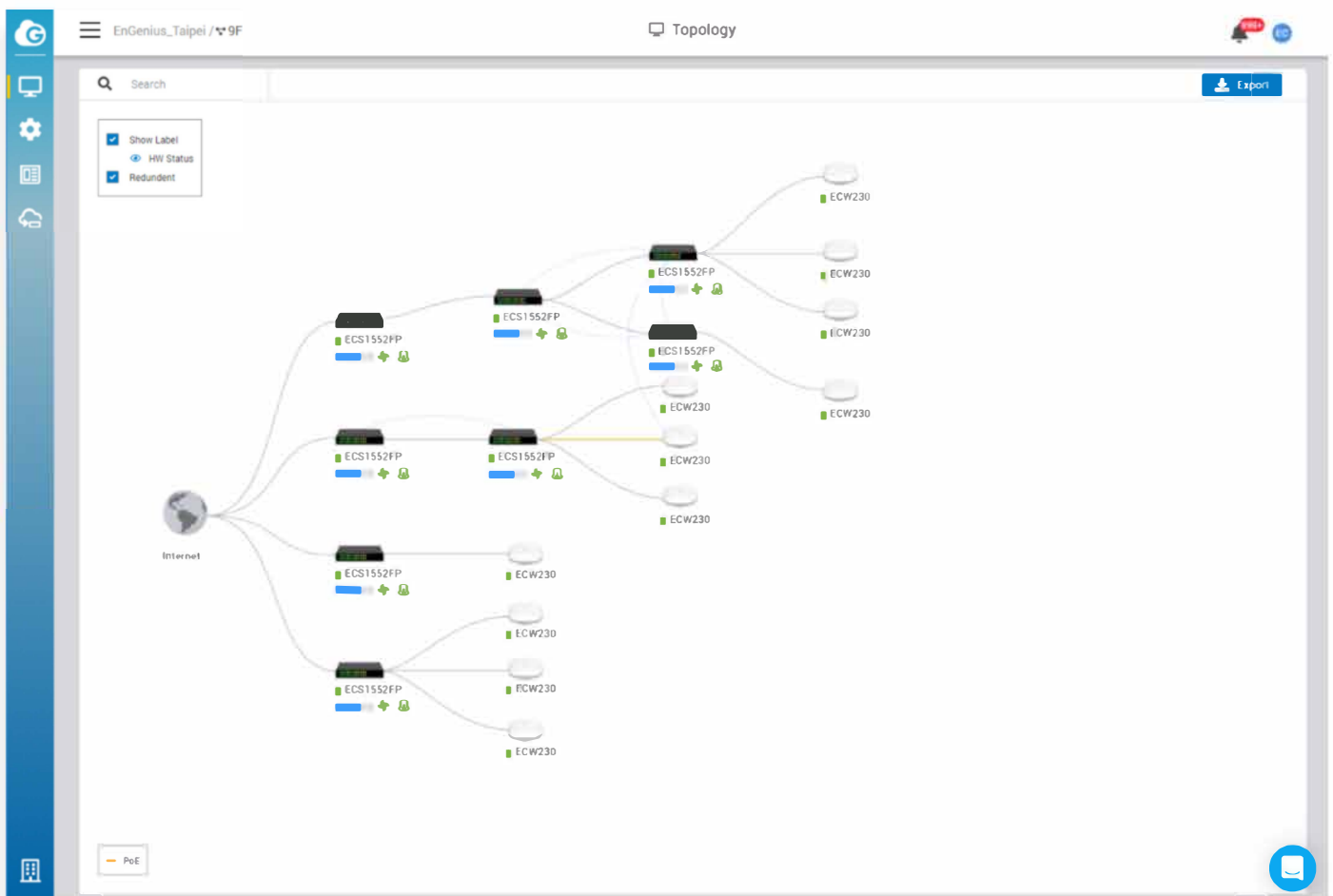
Cloud Management – remotely or locally manage EnGenius switches with EnGenius Cloud, a true license-free cloud management solution that provides quick deployment from anywhere, deep-dive analytics to review system performance, and custom device alerts through a simple to use smart phone app.

On-Premises Management – SkyKey

manage up to 100 EnGenius switches with the plug-and-play SkyKey device, which provides on-premises and subscription-free remote access capability through EnGenius Cloud under single-pane-of-glass capabilities.

On-Premises Management – ezMaster

manage 1,000s of EnGenius switches with ezMaster network software, an on-premises solution utilizing a Virtual Machine server or a private-cloud AWS account that easily configures and maintains multiple customer sites and thousands of devices via ezMaster network management software, all with no license or subscription fees.



EnGenius Cloud Switches



Models	ECS1008P	ECS1112FP	ECS1528FP	ECS1552FP
Network Standards	802.3 10Base-T Ethernet 802.3u 100Base-TX Ethernet 802.3ab 1000Base-T Ethernet 802.3x Full-Duplex Flow Control	802.3 10Base-T Ethernet 802.3u 100Base-TX Ethernet 802.3ab 1000Base-T Ethernet 802.3x Full-Duplex Flow Control	802.3 10Base-T Ethernet 802.3u 100Base-TX Ethernet 802.3ab 1000Base-T Ethernet 802.3x Full-Duplex Flow Control	802.3 10Base-T Ethernet 802.3u 100Base-TX Ethernet 802.3ab 1000Base-T Ethernet 802.3x Full-Duplex Flow Control
10/100/1000 Base-T, POE Ports	8	10	24	48
10/100/1000 SFP Ports	N/A	2 x 1G	N/A	N/A
10/100/1000/10000 SFP+ Ports	N/A	N/A	4 x10G	4 x10G
Rackmount	9.45" (desktop)	13" 1U	19" 1U	19" 1U
Total PoE Budget	55W	130W	410W	740W
PoE+ Capable Ports	1-8 (802.3af only)	1-8	1-24	1-48
Switching Capacity	16Gbps	24Gbps	128Gbps	176Gbps
Forwarding Mode	Store-and-forward	Store-and-forward	Store-and-forward	Store-and-forward
MAC Address Table	8k	8k	16k	32k
Packet Buffer Memory	512 KB	512 KB	2M	2M
Power Source	100 to 240 VAC 50/60Hz	100 ~ 240VAC 50-60Hz	100 to 240 VAC 50/60Hz	100 to 240 VAC 50/60Hz
Full Load Power Consumption	63.18 Watts	152.8 Watts	412.26 Watts	745.61 Watts
VLANs	VID from 1-4094 (Max. 256 groups)	VID from 1-4094 (Max. 256 groups)	VID from 1-4094 (Max. 256 groups)	VID from 1-4094 (Max. 256 groups)

Technical Specifications

Port Standards

ECS1008P/ECS1112FP/ECS1528FP/ECS1552FP

802.3 10Base-T Ethernet
802.3u 100Base-TX Ethernet
802.3ab 1000Base-T Ethernet
802.3x Full-Duplex Flow Control

Network Ports

ECS1008P

8 10/100/1000 Mbps Ports

ECS1112FP

10 10/100/1000 Mbps Ports + 2x SFP Ports

ECS1528FP

24 10/100/1000 Mbps Ports + 4x SFP+ Ports

ECS1552FP

48 10/100/1000 Mbps Ports + 4x SFP+ Ports

Switching Capacity

ECS1008P

16Gbps

ECS1112FP

24Gbps

ECS1528FP

128Gbps

ECS1552FP

176Gbps

SDRAM

ECS1008P/ECS1112FP

256MB

ECS1528FP/ECS1552FP

512MB

Flash Memory

ECS1008P/ECS1112FP

32MB

ECS1528FP/ECS1552FP

128MB

PoE Capable Ports

ECS1008P

1-8 (802.3af only)

ECS1112P

1-8

ECS1528FP

1-24

ECS1552FP

1-48

Total PoE Budget

ECS1008P

55W

ECS1112FP

130W

ECS1528FP

410W

ECS1552FP

740W

Power Source

ECS1008P/ECS1112FP/ECS1528FP/ECS1552FP

100 ~ 240VAC, 50-60Hz

Physical Interface

LED Indicators

ECS1008P/ECS1112FP/ECS1528FP/ECS1552FP

Power LED

Fault LED

PoE Max LED

LAN Mode LED

PoE Mode LED

Ports

ECS1008P/ECS1112FP/ECS1528FP/ECS1552FP

Link/Activity/Speed (per Ethernet port)

Link/Activity/Speed (per SFP slot)

Software Features(L3 Feature)

Multiple IP Interface

ECS1008P/ECS1112FP/ECS1528FP/ECS1552FP

20 IPv6 address

ARP Table

ECS1008P/ECS1112FP/ECS1528FP/ECS1552FP

Max. 192 ARP entries

Static ARP

ECS1008P/ECS1112FP/ECS1528FP/ECS1552FP

Static 192 ARP entries

IPv4 Static Route

ECS1008P/ECS1112FP/ECS1528FP/ECS1552FP

Max. 63 entries

IPv6 Static Route

ECS1008P/ECS1112FP/ECS1528FP/ECS1552FP

Max. 21 entries

Software Features(L2 Feature)

Network Management

ECS1008P/ECS1112FP/ECS1528FP/ECS1552FP

EnGenius Cloud

ezMaster

Local Web GUI

MAC Address Table

ECS1008P/ECS1112FP

8K

ECS1528FP

16K

ECS1552FP

32K

Jumbo Frame

ECS1008P/ECS1112FP/ECS1528FP/ECS1552FP

9K

Multicast Group

ECS1008P/ECS1112FP/ECS1528FP/ECS1552FP

Max 256 groups

MLD Snooping

ECS1008P/ECS1112FP/ECS1528FP/ECS1552FP

MLD Snooping: v1

QoS-Number of Priority Queues Supported

ECS1008P/ECS1112FP/ECS1528FP/ECS1552FP

Queue 8

Trust Mode

ECS1008P/ECS1112FP/ECS1528FP/ECS1552FP

Cos/802.1p

DSCP

CoS/802.1p-DSCP

Scheduling Mechanism

ECS1008P/ECS1112FP/ECS1528FP/ECS1552FP

Strict / WRR/ Strict + WRR

Bandwidth Control

ECS1008P/ECS1112FP/ECS1528FP/ECS1552FP

Port-based bandwidth control (Ingress/Egress)

Port Security

ECS1008P/ECS1112FP/ECS1528FP/ECS1552FP

Max. 256 Entries

Access Control List (ACL)

ECS1008P/ECS1112FP/ECS1528FP/ECS1552FP

MAC Based ACL

IPv4/IPv6 Based ACL

ACL Binding

Time base ACL

Technical Specifications

Web Graphical User Interface(GUI)

ECS1008P/ECS1112FP/ECS1528FP/ECS1552FP

HTTP IPv4 / IPv6

HTTPS IPv4 / IPv6

SSL Certificate

ECS1008P/ECS1112FP/ECS1528FP/ECS1552FP

Certificate/Key Import

SNMP

ECS1008P/ECS1112FP/ECS1528FP/ECS1552FP

SNMP v1/v2c/v3 Support

RMON

ECS1008P/ECS1112FP/ECS1528FP/ECS1552FP

RMON 1,2,3,9

System Time

ECS1008P/ECS1112FP/ECS1528FP/ECS1552FP

Time Setting/Daylight saving

Common L2 Features

ECS1008P/ECS1112FP/ECS1528FP/ECS1552FP

802.1d Spanning tree

Loopback Detection

Multicast Filitering

IGMP Multicast Forwarding

IGMP Snooping

MLD Multicast Forwarding

802.1Q VLAN tagging

802.3x flow control

802.3ad Link Aggregation

IPv4 DHCP Relay

IPv4 DHCP Snooping

IPv4 DHCP Snooping Source MAC Address Check-up

ARP Inspection

ARP Packet Validation (additional validation checks)

Voice VLAN

Port-based VLAN

Protocol-Based VLAN

CoS Mapping

802.1X Radius Authentication Protocol

IPv4 Settings

IPv6 Settings

IEEE 802.3az Energy Efficient Ethernet (EEE)

Command Line Interface (CLI)

SSH Server

Telnet Server

TFTP Client

Configuration Upgrade/ Backup

Simple Network Time Protocol (SNTP)

SYSLOG

802.1d Spanning tree

Environmental & Physical

Temperature Range

ECS1008P

Operating: 32°F to 104°F (0°C to 40°C)

ECS1112FP/ECS1528FP/ECS1552FP

Operating: 32°F to 122°F (0°C to 50°C)

Humidity (Non-Condensing)

ECS1008P/ECS1112FP/ECS1528FP/ECS1552FP

Operating: 5% - 95%

Package Contents

ECS1008P

1x ECS Managed Gigabit Switch

1x Quick Installation Guide

1x Power Adapter

1x Power Cord

1x Wall Mount Kit

1x Ground Screw Set

ECS1112FP/ECS1528FP/ECS1552FP

1x ECS Managed Gigabit Switch

1x Quick Installation Guide

1x Power Cord

1x RJ45 Console Cable

1x Rack Mount Kit

Device Dimensions & Weights

Weight

ECS1008P

Weight: 1.5Kg

Width: 105mm

Length: 240mm

Height: 27mm

ECS1112FP

Weight: 1.9Kg

Width: 330mm

Length: 229mm

Height: 44mm

ECS1528FP

Weight: 4.7Kg

Width: 260mm

Length: 440mm

Height: 44mm

ECS1552FP

Weight: 5.9Kg

Width: 310mm

Length: 440mm

Height: 44mm

Warranty

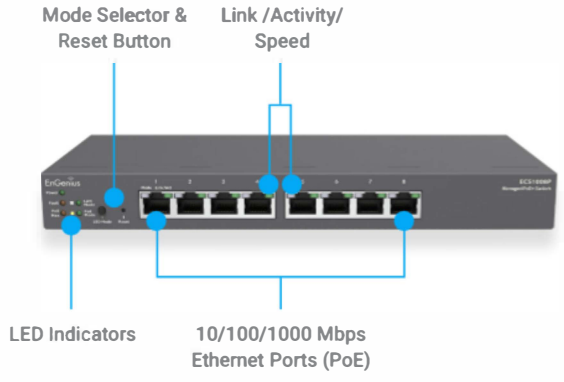
ECS1008P/ECS1112FP/ECS1528FP/ECS1552FP

2 year

Maximum data rates are based on IEEE 802.11 standards. Actual throughput and range may vary depending on distance between devices or traffic and bandwidth load in the network.

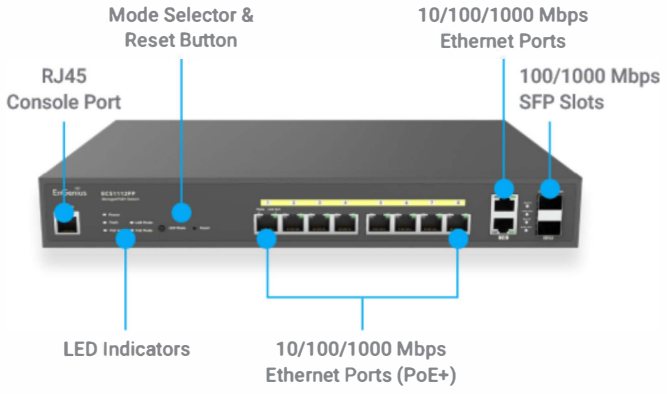
Desktop

ECS1008P

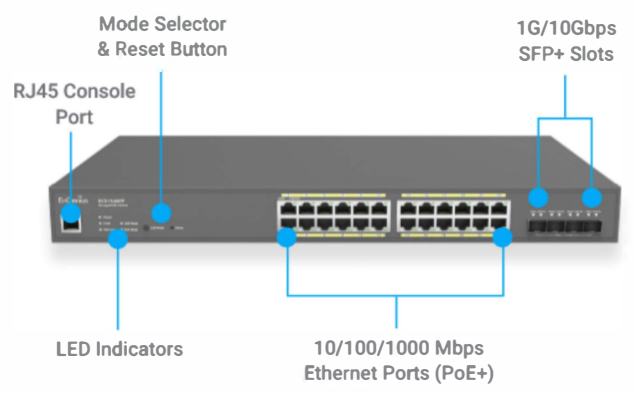


Rackmount

ECS1112FP



ECS1528FP



ECS1552FP

